



# **SOUTH AUSTRALIAN ECONOMIC INDICATORS**

EMBARGO: 11:30 AM (CANBERRA TIME) MON 3 MAY 1999

## **C O N T E N T S**

	<i>page</i>
Notes.....	2
REVIEW	
South Australian overview .....	3
State accounts .....	3
International accounts .....	5
Consumption and investment .....	6
Production .....	8
Prices.....	10
Labour force and demography .....	13
Incomes .....	16
Financial markets .....	17
Forward outlook .....	20
TABLES	
List of tables .....	23
ADDITIONAL INFORMATION	
Publications source index .....	47

- For further information about these and related statistics, contact Bethany Fenech on Adelaide 08 8237 7332, or any ABS office shown on the back cover of this publication.

## NOTES

### FORTHCOMING ISSUES

<i>ISSUE</i>	<i>RELEASE DATE</i>
June 1999	1 June 1999
July 1999	1 July 1999
August 1999	2 August 1999
September 1999	1 September 1999
October 1999	1 October 1999
November 1999	1 November 1999



### ABOUT THIS PUBLICATION

*South Australian Economic Indicators* is a monthly publication which contains the latest available data at the time of preparation for a range of statistical series that have been identified as indicators of economic activity in this State. In a number of cases the figures presented are preliminary and subject to revision in subsequent issues.



### CHANGES IN THIS ISSUE

The personal finance graph which previously showed personal fixed loan commitments, all lenders, now shows total personal commitments (fixed plus revolving finance), all lenders.



### SYMBOLS AND OTHER USAGES

n.a.	not available
n.y.a.	not yet available
*	subject to sampling variability too high for most practical purposes
..	not applicable
0, 0.0	nil or rounded to zero



### ROUNDING

Where figures have been rounded, discrepancies may occur between sums of the component items and totals.



### INFORMATION

More detailed information on each series, including explanatory and technical notes, can be obtained from other Australian Bureau of Statistics publications or alternative data sources. To assist those seeking further information a source publication for each of the series has been documented in the statistical summary.

I. Crettenden  
Regional Director  
South Australia

# REVIEW

---

## SOUTH AUSTRALIAN OVERVIEW

- The value of merchandise exports, where the final stage of production was in South Australia, was \$405.5m in February 1999, an increase of 8.1% from January 1999. The value of merchandise imports released from Customs control in South Australia fell to \$302.0m in February 1999. This represents a 1.5% (\$4.7m) reduction from January 1999.
- The trend estimate growth rate for retail turnover increased slightly to 0.4% for February 1999.
- The trend for new motor vehicle registrations continued the decline evident since the record high in June 1998 (4,679), down 0.5% to 4,061 in February 1999.
- The trend for total dwelling unit approvals increased to 641 in February 1999, a rise of 2.8% from January 1999.
- In January 1999 there were 8,669 short-term overseas visitor arrivals to South Australia. This represents a fall of 34.2% from December 1998, however a comparison with the same time last year shows a rise of 14.3%.
- The trend estimate of employed persons in South Australia has increased steadily since July 1998. The latest estimate for March 1999 (658,900) is 2.6% higher than the level of 12 months ago (641,900).
- The trend estimate of the unemployment rate for South Australia has decreased in recent months, reaching 9.0% in March 1999.
- A total of 4,600 working days were lost through industrial disputation in December 1998, an increase of 3,000 working days from November 1998.
- In February 1999 the trend estimate for the value of new housing commitments (excluding alterations and additions) increased marginally for the fifth consecutive month.

## STATE ACCOUNTS

### Trend (Chain volume measures)

State final demand (SFD) increased 0.2% in the December quarter 1998. After reaching a peak of 2.3% for the September quarter 1997, growth in SFD steadily declined to 0.2% and has remained close to this rate for the past three quarters. The decline in SFD over this period is due mainly to a fall in private gross fixed capital expenditure. The national trend increased by 1.1% for the December quarter. Growth has remained constant at this rate for the past four quarters. The national growth rate continued to exceed the SFD growth rate over the same period.

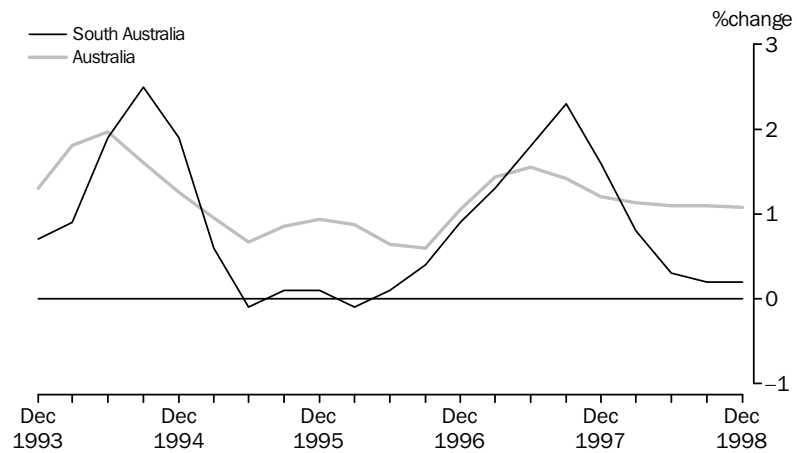
Growth through the year to December quarter 1998 was 1.5% compared with the national rate of 4.5%. Only Tasmania and Western Australia recorded lower increases for this period.

Contributing to the growth of SFD was a 0.9% increase in household final consumption expenditure, offset by a 5.2% fall in the growth rate of private gross fixed capital expenditure (due mainly to a 11.3% fall in other buildings and structures and a 6.6% fall in plant and machinery). Public final demand increased by 1.6%.

Trend (Chain volume measures) *continued*

The 0.9% growth in private household final consumption expenditure compares with the national rate of 1.3%. South Australia has now fallen below the national rate for the past two quarters after exceeding the national rate for four consecutive quarters. Annual growth to the December quarter was 4.3%, compared with the national rate of 4.2%.

State final demand: **Trend** (Chain volume measures ) (a)



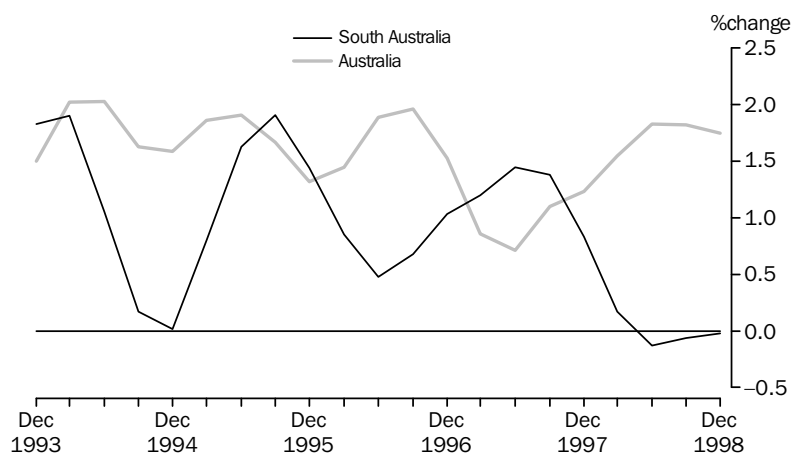
(a) Quarterly changes

Trend (Current prices)

There was no growth in compensation of employees for the December quarter. The national rate was 1.8%.

Growth through the year to December quarter was also zero, significantly below the national rate of 7.1%. South Australia was the only State not to record an increase and has now been below the national rate for the past five quarters.

Compensation of employees: **Trend** (Current prices) (a)



(a) Quarterly changes

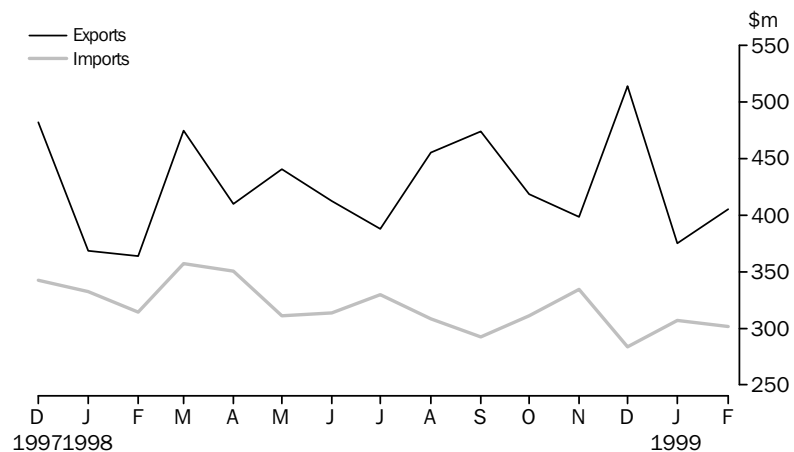
INTERNATIONAL ACCOUNTS

Merchandise exports

The value of merchandise exports, where the final stage of production was in South Australia, was \$405.5m in February 1999. This represents an increase from both January 1999 and February 1998, up 8.1% and 11.4% respectively. Of published commodity groups, cereals and cereal preparations recorded the only decrease from January 1999, down 51.3% (\$47.7m) to \$45.3m. The largest increases were recorded in metals and metal manufactures, rising \$15.2m (47.3%) to \$47.5m and wine, up 28.3% to \$50.2m. These increases were also reflected in exports by industry of origin, with food, beverages and tobacco and metal product both increasing, up 28.0% and 50.9% respectively.

The major destination of South Australian exports in February 1999 was Japan with exports worth \$51.3m. All major trading partners except the Middle East and China recorded an increase from the previous month. The largest increases were recorded for Japan, up \$26.1m (103.6%) to \$51.3m and ASEAN countries, up 86.1% to \$35.3m. These increases contributed to the 36.1% rise in exports to total East Asia.

Merchandise exports and imports



Merchandise imports

The value of merchandise imports released from Customs control in South Australia fell to \$302.0m in February 1999. This represents a 1.5% (\$4.7m) reduction from January 1999 and a 3.9% reduction from the same period last year. Imports of machinery experienced the largest reduction, falling 18.9% (15.1m) to \$64.6m. Petroleum and petroleum products and road vehicles, parts and accessories recorded the largest increases for the period, up 81.5% and 16.8% respectively. Textiles also recorded a small increase for the period.

CONSUMPTION AND INVESTMENT

Retail turnover

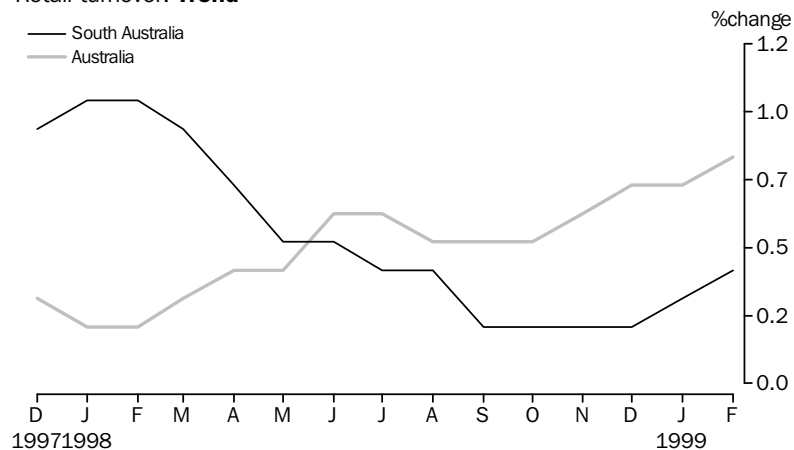
The trend estimate growth rate of retail turnover increased slightly to 0.4% for February 1999. Household good retailing and food retailing both showed strong growth, up 1.1% and 0.8% respectively, with increases also recorded in other retailing and department stores. All other groups recorded negative growth rates.

Over the three months to February 1999, the trend estimate has increased by \$8.3m to \$892.2m. The contributors to this growth were food retailing (\$10.3m), household good retailing (\$3.7m) and other retailing (\$2.3m). No change was recorded for department stores over the period and all other groups recorded reductions.

In original terms, retail turnover for February 1999 was \$779.8m. This represents an 11.3% fall from January 1999 and a 5.2% increase from the same time last year. South Australia accounted for 7.3% of the Australian total.

Australian retail turnover was \$10,671.5m in February 1999, a decrease of 10.2% from January 1999 and an increase of 7.3% on February 1998.

Retail turnover: **Trend**



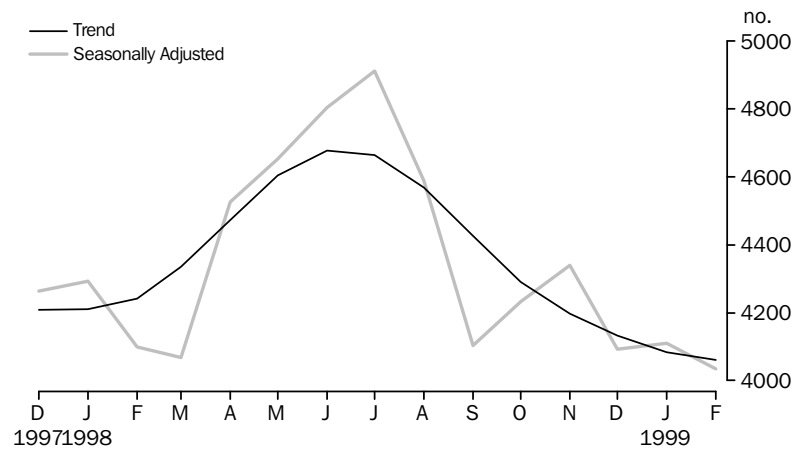
New motor vehicle registrations

The trend for new motor vehicle registrations continued the decline evident since the record high in June 1998 (4,679), down 0.5% to 4,061 in February 1999.

In original terms there were increases in both passenger and other vehicles registered, up 28.9% and 28.5% respectively. This resulted in an overall increase of 28.8% in new motor vehicle registrations, recorded at 3,923 for February 1999. Leading makes of passenger vehicles in South Australia were Holden (725), Mitsubishi (608), Ford (572), Toyota (437), Hyundai (171), Nissan (143) and Subaru (97).

There were 60,330 new motor vehicle registrations registered Australia wide in February 1999. This was an increase from both January 1999 and February 1998, up 20.4% and 0.2% respectively.

New motor vehicle registrations



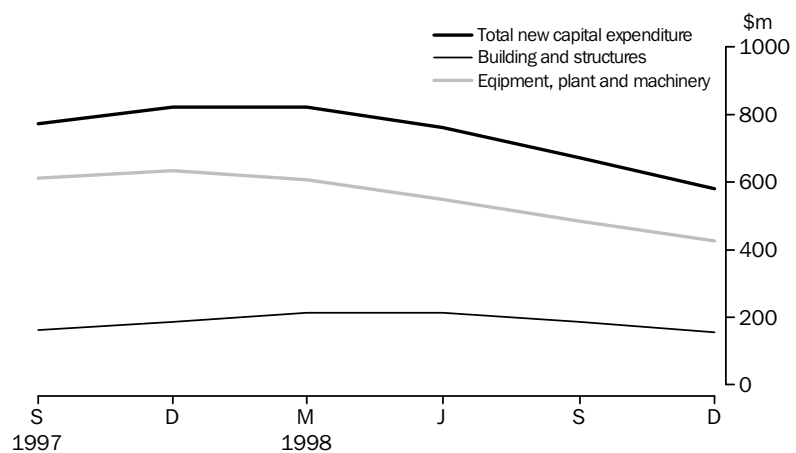
Private new capital expenditure

The trend estimate at current prices for private new capital expenditure for the December quarter 1998 fell 13.7% from the previous quarter to \$581.0m. Expenditure on buildings and equipment both decreased, down 16.6% and 12.4% respectively. When compared with the December quarter 1997, total expenditure has fallen by 29.3% (\$241.0m). Expenditure on buildings has decreased by \$31.0m (16.6%) and equipment fell by \$210.0m (33.1%).

In original terms, private new capital expenditure increased to \$665.0m for the December quarter 1998, a rise of 10.7% from the previous quarter (\$601.0m).

Equipment, plant and machinery accounted for \$495.0m and building and structures \$170.0m.

Private new capital expenditure, type of asset: **Trend**



Tourist accommodation

The number of rooms and units available in licensed hotels, motels and guest houses, and serviced apartments with 15 or more rooms or units increased 3.8% in the December quarter 1998 compared with the December quarter 1997. The room occupancy rate increased from 59.9% to 60.8%. Takings for all accommodation types increased when compared with December quarter 1997, with total takings increasing from \$45.4m to \$49.8m. Average takings per room night occupied rose from \$85.00 to \$88.60.

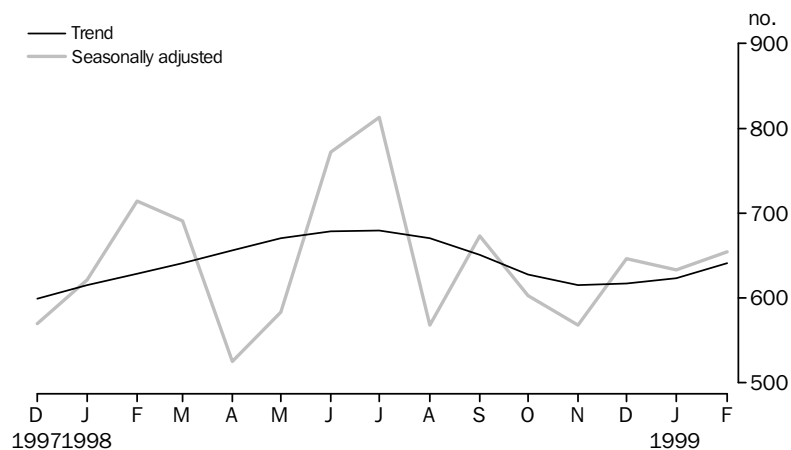
**PRODUCTION**

Building approvals

The trend for total dwelling units approved increased by 2.8% in February 1999. The trend for private sector houses however was flat, with no change recorded. In original terms, there were 607 total dwelling units approved in February 1999, an increase of 36.7% on January 1999. In comparison, total dwelling units approved for Australia increased 21.9% to 12,030. South Australia accounted for 5.0% of total dwelling unit approvals in February 1999.

The value of total building approved increased by \$65.9m (53.5%) to \$189.0m in February 1999. A single shop worth \$64.0m accounted for most of the increase. This was also reflected in the increase in non-residential building approved, up 74.1% to \$118.4m. Total residential building also increased in February 1999, a result of increases in both new residential building and alterations and additions to residential building, up 27.6% and 30.4% respectively.

Dwelling units approved

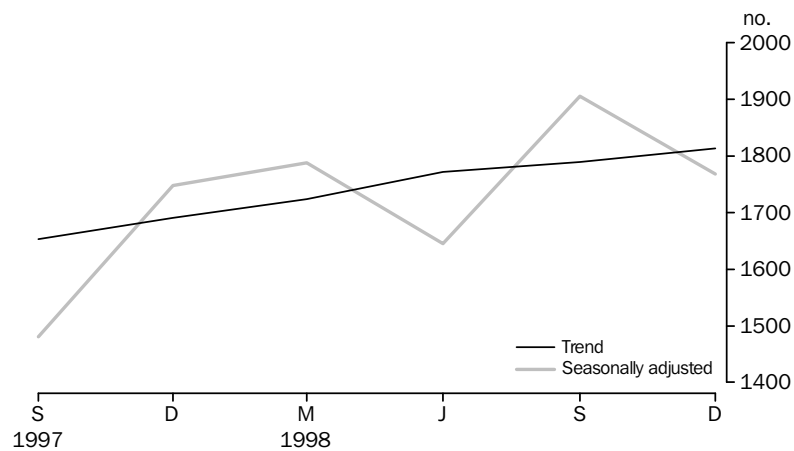




Building activity

For the December quarter 1998, the trend for total number of dwelling units commenced increased from both the September quarter 1998 and December quarter 1997, up 1.3% and 7.3% respectively. Corresponding national figures show a fall of 2.3% from the previous quarter and an increase of 0.3% from the same time last year. In original terms, there were 1,932 dwelling units commenced in the December quarter 1998, a fall of 2.4% (48) from the previous quarter. South Australia accounted for 5.3% of all dwelling unit commencements for the quarter.

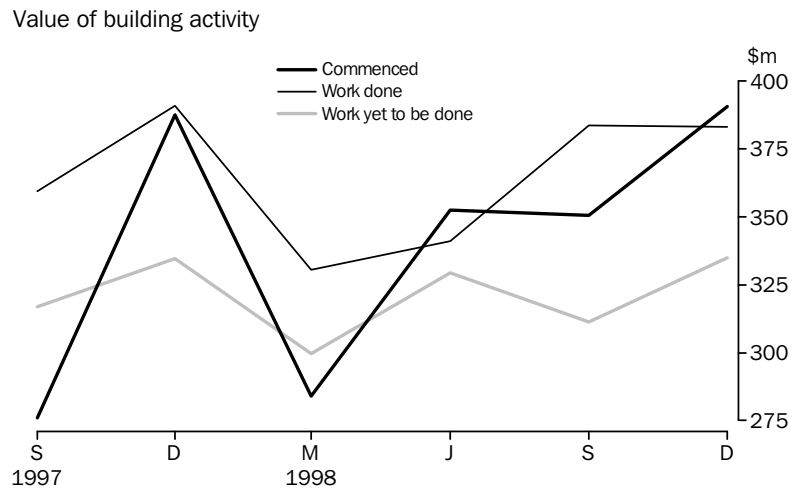
Dwelling units commenced



The value of total building work commenced increased 11.4% (\$39.9m) from the September quarter 1998 to \$390.6m for the December quarter 1998. This was the result of an increase in the value of new residential building, up 23.4%. This was partially offset by a fall in the value of non-residential building, down to \$128.9m in the December quarter 1998 from \$131.1m the previous quarter.

South Australia was one of only two States to record a reduction in the total value of building work done in the December quarter 1998, down 0.2% to \$383.0m. This was the result of a 3.5% (\$5.7m) fall in the value of total non-residential building, offset by a 2.3% increase in the value of total residential building. Nationally, there was a 5.6% increase in the value of building work done in the December quarter 1998.

The value of building work yet to be done at the end of the December quarter 1998 was \$334.9m. This was an increase of 7.6% on the figure at the end of September quarter 1998 and accounted for 2.6% of the corresponding national figure.



Engineering construction

The value of engineering construction work done in the December quarter 1998 increased by 0.6% to \$245.9m. In comparison, the value of work done Australia wide increased by 7.1%. South Australia accounted for 5.3% of the national figure, lower than the 7.2% recorded in the same period the previous year. The value of work commenced during the December quarter 1998 rose 15.7% to \$205.3m, similar to the national increase of 14.3%. Major contributors to value of work commenced during the period were Roads, highways and subdivisions (\$62.9m), Oil, gas, coal and other minerals (\$37.2m) and Electricity generation, transmission and distribution (\$35.7m).

PRICES

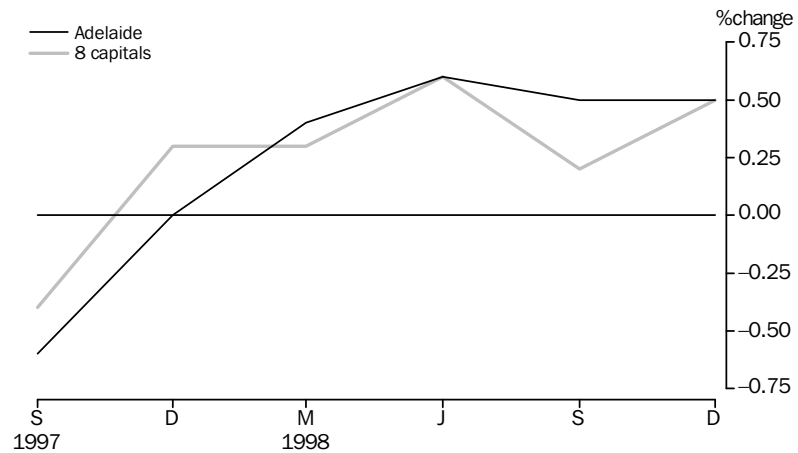
Consumer Price Index

The Consumer Price Index (all groups) in Adelaide rose 0.5% in the December quarter 1998. The groups which contributed most to the overall increase this quarter were food and housing. The clothing, alcohol and tobacco, household equipment and operation, recreation and education groups all had small increases which were partly offset by decreases in transport, and health and personal care.

In annual terms, the index has shown a 2.0% increase between December quarters 1997 and 1998.

The Consumer Price Index for the weighted average of eight capital cities rose 0.5% from the previous quarter and rose 1.6% compared with last year.

Consumer price index

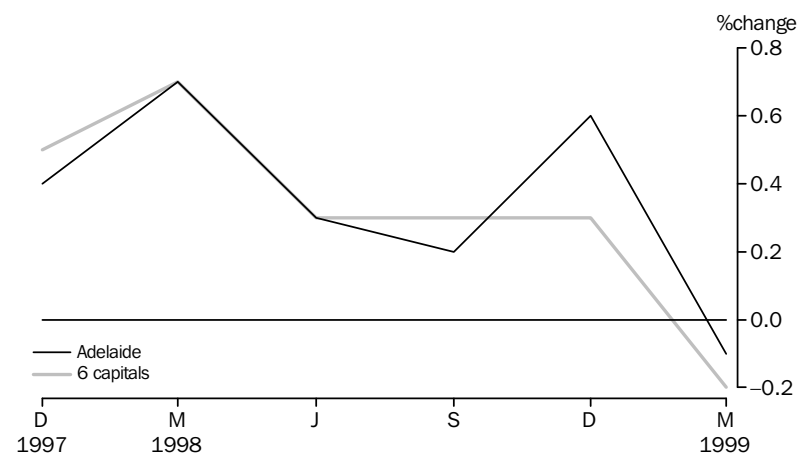


House building materials index

The Price Index of Materials used in House Building fell by 0.1% for the March quarter 1999 in Adelaide. Structural timber recorded an increase in price for the period while plastic pipes and fittings had a price reduction. Adelaide was the only city in which the price of plastic pipes and fittings fell. The weighted average of the six State capitals fell by 0.2% over the same period.

In the 12 months to the March quarter 1999 Adelaide recorded a rise of 1.1% in the Index, higher than the 0.7% increase recorded for the weighted average of the six State capitals over the same period.

Materials used in house building

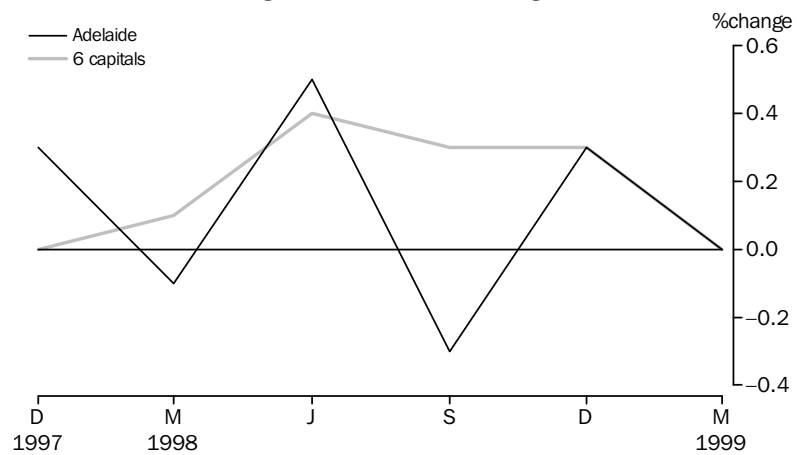


Non-house building materials index

The Price Index of Materials used in Building other than House Building showed no change in the March quarter 1999. Of selected major building materials, only paint and other coatings and structural steel recorded increases. Materials to record reductions included structural timber, clay bricks, ready mixed concrete, non-ferrous pipes and fittings and carpet. The weighted average of the six State capitals also showed no change for the same period.

For the 12 months to the March quarter 1999, Adelaide recorded a 0.5% increase in the Index, while the weighted average of the six State capital cities rose by 1.0%.

Materials used in building other than house building



House prices indexes

The December quarter 1998 Price Index of Established Houses in Adelaide fell marginally from September quarter 1998, down 0.1% to 113.0. However, a comparison with the same period last year shows an increase of 2.0%. The weighted average of the eight capital cities index increased from September quarter 1998 and the December quarter 1997, up 1.7% and 6.4% respectively.

The Project Home Price Index increased 1.8% during the December quarter 1998 and 3.3% when compared with the same time the previous year. Nationally, the weighted average of the eight capital cities index also increased, rising 0.8% from the September quarter and 2.1% from the December quarter 1997.

Passenger transport cost index

The Passenger Transport Cost Index measures changes in the costs of operating a public transport passenger bus service in Adelaide. Costs covered include labour costs, leasing charges, registration and insurance, repairs and maintenance, fuel and overheads. The All Groups index number for December quarter 1998 is 112.4, up from 111.5 in the previous quarter. This rise is due to increases in fuel prices and parts for mechanical repairs. The prices for the other items in the index remained unchanged from the last quarter. The All Groups index number excluding Compulsory Third Party Insurance increased 3.3% from December quarter 1997 to December quarter 1998.

LABOUR FORCE AND DEMOGRAPHY

Population

At 30 September 1998 the estimated resident population of South Australia was 1,488,838. This was an increase of 1,544 persons from the June quarter and was due to a natural increase of 1,188 persons and a net migration gain of 356 persons.

Between 30 September 1997 and 30 September 1998 the population for South Australia grew by 0.5% compared with the Australian rate of 1.3%. In September 1998 South Australia represented 7.9% of the Australian population.

Short-term overseas visitor arrivals

There were 8,669 short-term overseas visitor arrivals to South Australia in January 1999, a fall of 34.2% from December 1998. A comparison with the same time last year shows a rise of 14.3%. South Australia accounted for 2.5% of national short-term visitor arrivals in January 1999.

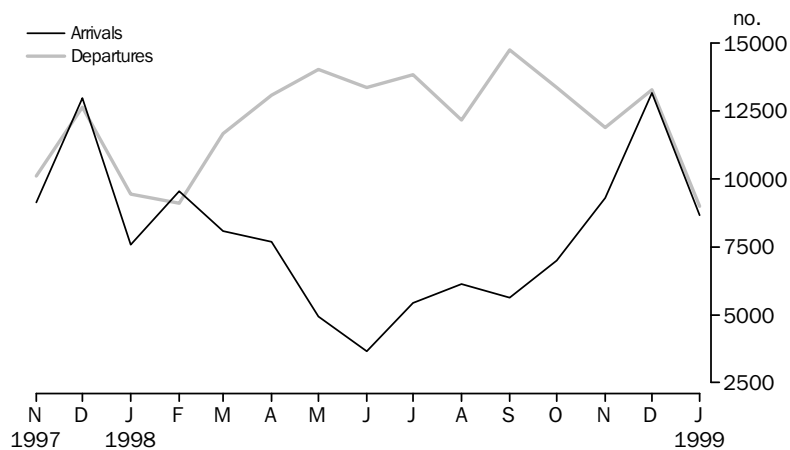
In January 1999 there were 350,977 short-term overseas visitor arrivals to Australia. This was a 23.3% fall on last month and the annual change was an increase of 1.4%.

Short-term resident departures

In January 1999 there were 8,993 short-term resident departures from South Australia. This represents a reduction from both December 1998 and January 1998, down 32.3% and 4.9% respectively. South Australia accounted for 3.9% of all resident departures in January 1999.

Nationally there were 232,716 short-term resident departures in January 1999. This represents a 26.8% fall from the previous month and a 12.2% increase when compared with January 1998.

Short-term arrivals and departures

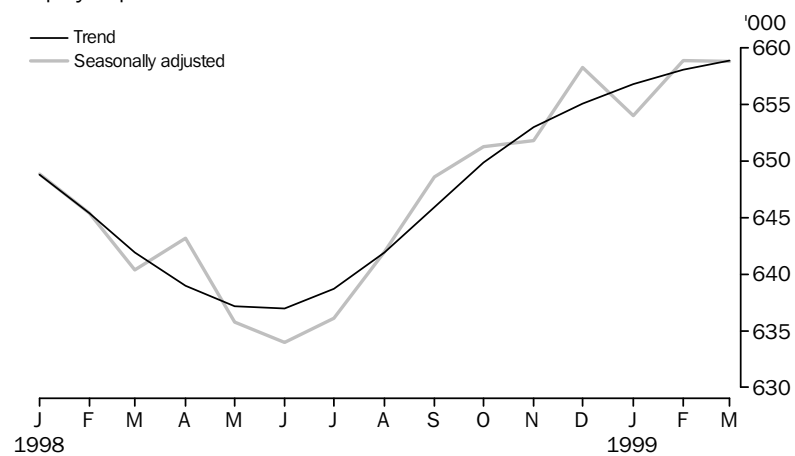


Employment

The trend estimate of employed persons in South Australia has increased steadily since July 1998. The latest estimate (658,900) is 2.6% higher than the level of 12 months ago (641,900). Most of the recent increase has been in female part-time employment, which has increased 7.9% since July 1998. Male part-time employment has increased 5.1% over the same period.

The Australian trend estimate of employed persons has increased steadily over the past 22 months, reaching 8,700,800 in March 1999.

Employed persons



Labour force participation

The labour force participation rate expresses the labour force (or all employed and unemployed persons) as a proportion of the total population aged 15 and over. It measures the economically active or productive element within the working age population. After declining in the earlier part of the year, the trend estimate of the labour force participation rate has slowly increased since July 1998. The current level in March 1999 (60.6%) is the same as the previous four months and is slightly higher than that of March 1998 (60.1%).

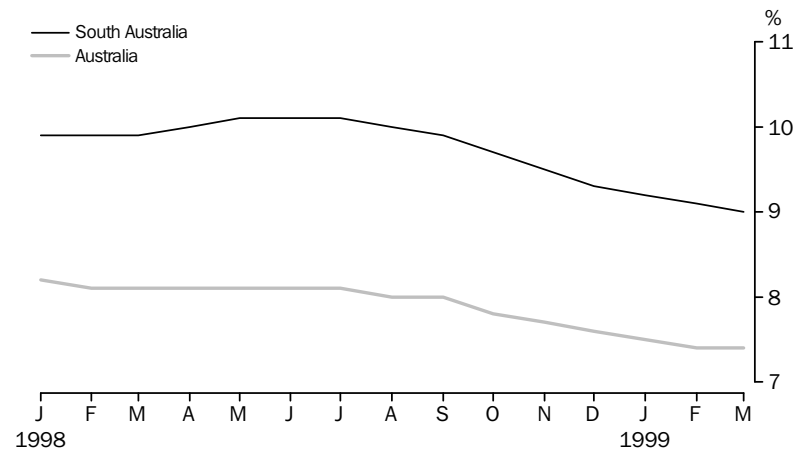
The trend estimate participation rate for Australia fell by 0.1 percentage points to 62.9%, with both the male and female rates remaining steady at 72.7% and 53.6% respectively.

Unemployment

The trend estimate of the unemployment rate for South Australia has decreased in recent months, reaching 9.0% in March 1999. A year earlier, the rate was higher at 9.9%. The trend for Australia has declined gradually in the 12 months to March 1999. The current rate (7.4%) is lower than the level observed in March 1998 (8.1%).

In original terms, the teenage full-time unemployment rate for South Australia was 36.2% in March 1999, up from the 30.0% recorded in February 1999. This does not mean that almost 4 in 10 of the State's 15–19 year olds are unemployed. The latest result indicates that 8,100 persons aged 15–19 were actively seeking full-time work out of a teenage, full-time labour force of 22,400. The majority of 15–19 year olds (77,700 out of 100,100) were unavailable for full-time work. This group includes students, both tertiary and secondary, and those in the part-time labour force.

Unemployment rates: **Trend**



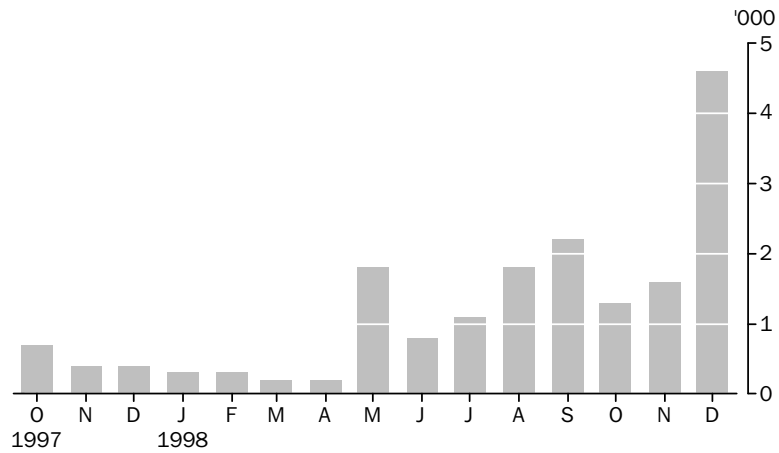
Industrial disputes

A total of 4,600 working days were lost through industrial disputes in December 1998, an increase of 3,000 working days from November 1998. South Australia contributed 9.1% to the national level of 50,500 working days lost.

The number of working days lost in South Australia in the 12 months to December 1998 was 16,100, over double the 8,000 days lost in the 12 months to December 1997.

Nationally, the number of working days lost for December 1998 increased by 26,200 days to 50,500 days. The annual estimate was 524,900 days lost, a fall of 9,300 days from the 12 months ended December 1997.

Industrial disputes, working days lost



Overtime

In original terms, the proportion of employees who worked overtime in February 1999 was 15.0%, compared with 14.2% in November 1998. There was a 7.2% decrease from the corresponding quarter of the previous year. The percentage of employees working overtime in South Australia in February 1999 was the same as the national rate of 15.0%.

In February 1998, employees who worked overtime in South Australia recorded an average of 5.7 overtime hours per week. This was higher than the 5.4 overtime hours recorded 12 months earlier and lower than the Australian average of 7.1 hours.

INCOMES

Average weekly earnings

The trend estimate of average weekly ordinary time earnings of full-time adult employees increased by 1.3% from August 1998 to November 1998. Full-time ordinary earnings for males and females also rose by 1.9% and 0.2% respectively.

Between November 1997 and November 1998 the trend estimate of average weekly ordinary earnings of adult female employees increased 4.6%, compared with a larger increase of 6.6% for males.

For Australia, the trend estimate of full-time adult ordinary time earnings for males rose 4.0% over the 12 months to November 1998 and females increased by 4.3%.

Note: since it is an average of earnings across all employees, changes in average weekly earnings may occur through changes in employment as well as changes in pay levels.



**Wage cost index**

The Wage Cost Index measures quarterly changes in wage and salary costs for employee jobs. Hourly rates of pay are collected on both an ordinary time and total time basis, with or without bonuses. The first reference period is the quarter to December 1997. This new measure replaces the discontinued award rates of pay index.

In South Australia, the index of total hourly rates of pay (excluding bonuses) increased by 0.6% between September and December quarters 1998. Nationally, the corresponding increase was also 0.6%. The annual change for South Australia was 3.0% compared with 3.1% for Australia.

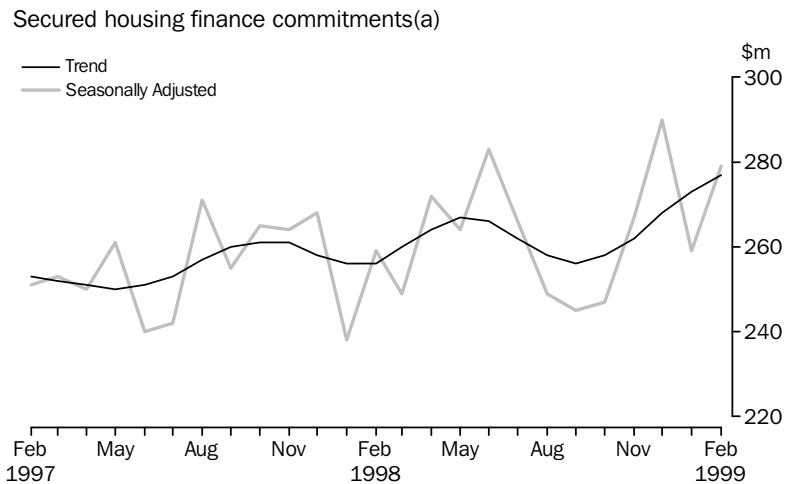
In South Australia, the index of ordinary time hourly rates of pay (excluding bonuses) rose by 0.7% in the quarter to December 1998. The Australian rate increased 0.6% for the same period. The annual rate increase of 3.1% was the same for both South Australia and Australia.

**FINANCIAL MARKETS****Housing finance**

In February 1999 the trend estimate for the value of new housing commitments (excluding alterations and additions) increased marginally for the fifth consecutive month. Seasonally adjusted, the value increased 7.7% to \$279.0m, 7.7% above the previous February. Nationally the trend estimate increased for the sixth consecutive month, reaching a record high (\$5,168m), while the seasonally adjusted value fell marginally. South Australia's proportion of the national total increased to 5.6%.

South Australia has followed the national pattern over the past four months with the number of dwellings financed being lower than the corresponding month of the previous year while the value of new commitments in each month has been higher. The number of dwelling commitments in February 1999 increased 26.2% to 3,019, however this was 2.8% lower than February 1998. Total new commitments (original figures including alterations and additions) increased 25.2% to \$283.0m, 7.2% above the previous February. The average value of commitments was \$90,700, while nationally the average decreased to \$125,800.

All the main categories increased significantly in value following big falls in January. Commitments for purchase of established dwellings increased 21.9% to \$184.0m in February 1999, 17.9% above the previous February. Construction of dwellings increased 48.1% to \$40.0m, 16.1% above February 1998, while nationally, construction increased 33.9%. South Australian commitments for the purchase of newly erected dwellings increased 40.0% to \$7.0m and refinancing increased 30.3% to \$43.0m. Both of these categories were significantly lower than February 1998. Alterations and additions remained unchanged.



(a) Excludes alterations and additions. Includes refinancing.

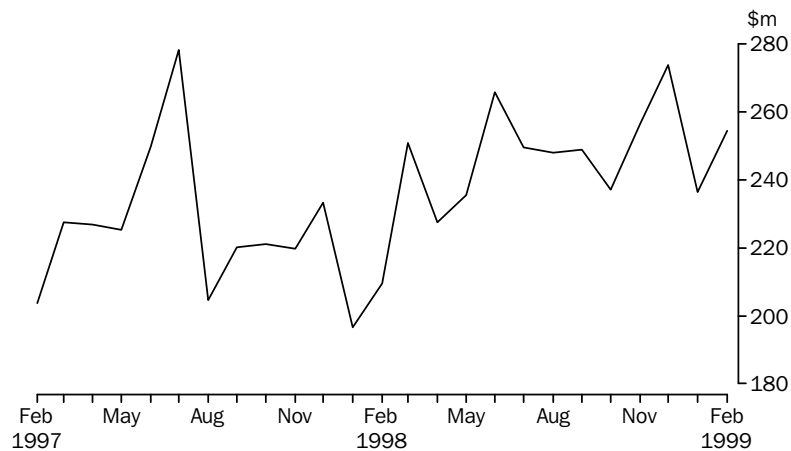
Personal finance

Total personal finance commitments for February 1999 increased 7.7% to \$254.5m, 21.5% above the previous February. Total commitments have been significantly above the corresponding month of the previous year for the past six months. Nationally personal commitments increased 10.9% in original figures, representing an increase of 3.8% when seasonally adjusted. South Australia accounted for 7.1% of the national total.

Total revolving credit facilities increased 12.7% to \$132.6m, 45.9% higher than February 1998. The increase was split between the rise in secured, up 12.1% to \$85.0m, 71.5% above the previous February and unsecured which increased 14.0% to \$47.6m, 15.1% up over the year.

Fixed loan commitments continued to rise steadily for the fourth consecutive month, increasing 2.6% to \$121.9m, 2.9% above February 1998. The main increase was for debt consolidation, up 55.8% to \$9.6m, however the past 12 months of this category have all been lower than the corresponding month of the previous year. The other main increases were new motor cars and station wagons, up 14.1% to \$15.2m, 8.6% above the previous February and other motor vehicles, which doubled the January figure to reach \$5.0m. The main decrease was used motor cars and station wagons, down 11.3% to \$35.8m following the highest month since June 1997.

Personal loan commitments, all lenders



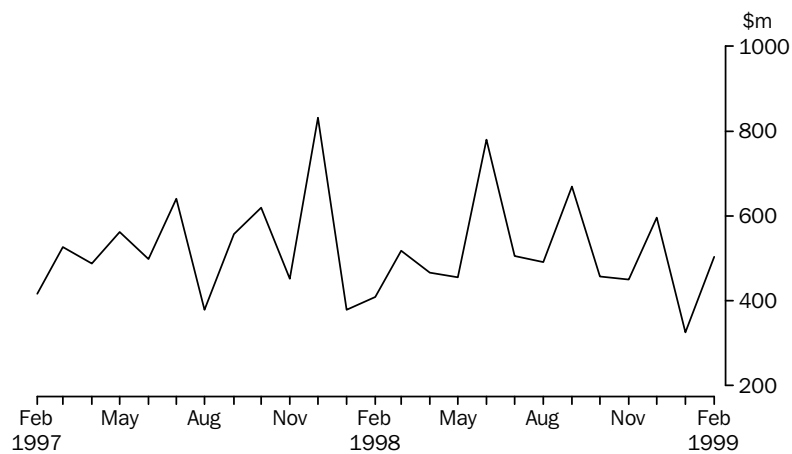
Commercial finance

Total commercial finance increased 54.9% to \$504.3m in February 1999, 23.2% up on February 1998 and following the lowest month since early 1995. The Australian total increased 18.6% for the month in original figures and 14.8% when seasonally adjusted. South Australia's proportion of the national total increased to 4.0%.

Revolving credit facilities increased 65.1% to \$199.0m, 55.3% above the previous February. The main increase was manufacturing, up \$39.8m to \$49.1m, following a low January. Agriculture, forestry, fishing and hunting was up \$24.2m to \$42.4m, 8.8% lower than February 1998 and wholesale trade increased \$18.5m to \$50.6m, the highest month since June 1988. The main fall was mining, down \$11.6m to \$3.4m following the highest month since May 1997.

Fixed loan facilities increased 49.0% to \$305.2m, 8.6% above February 1998. All categories apart from construction (with a 5.7% fall), increased with the main rise being finance, investment and insurance, up \$43.0m to \$48.0m, the highest month since June 1992. Agriculture, forestry, fishing and hunting was up \$13.2m to \$46.4m, 15.8% higher than the previous February. Transport and insurance increased \$11.8m to \$20.1m, 81.9% higher than February 1998.

Commercial finance commitments, all lenders



Lease finance

In February 1999 new finance lease commitments decreased 10.4% to \$19.6m, 5.4% higher than the previous February. The fall in South Australia was in contrast to the Australian total which increased 24.2% in original terms, representing a marginal fall when seasonally adjusted. South Australia's proportion of Australian lease finance dropped to 2.9%.

The decrease was mainly due to commitments for office machines falling \$1.7m to \$1.4m. Used heavy trucks and the category covering construction and earthmoving equipment were both down \$0.9m, to \$0.3m and \$0.2m respectively. All three categories had large increases in the previous month.

The main increase in February was agricultural machinery and equipment, up \$1.1m to \$2.8m, 77.2% higher than the previous February. Used motor cars, station wagons and small passenger vehicles not subject to depreciation increased \$0.6m to \$2.1m, 33.3% up on February 1998.

FORWARD OUTLOOK

Composite leading indicator for Australia

The Composite Leading Indicator (CLI) is a single time series produced by aggregating eight individual economic indicators, and has been developed by the ABS as an experimental series to supplement existing forms of economic analysis and modelling.

The CLI summarises the early signals contained in a selection of economic indicators and is designed to assist the detection of turning points between successive expansions and slow downs of economic activity as measured by constant price GDP(A). It does not attempt to forecast the level of economic activity.

Composite leading indicator for Australia

In the December quarter 1998, the experimental CLI fell 0.08%, following a fall of 0.27% in the September quarter 1998. This is the fifth consecutive fall and confirms the peak in the CLI in the September quarter 1997.

The quarterly data are released in more detail in the *Australian Economic Indicators* (Cat. no. 1350.0). The CLI was the topic of the Focus article in the September 1993 edition of *South Australian Economic Indicators* (Cat. no. 1307.4). A review of the performance of the CLI and its components was published in the July 1997 issue of Cat. no. 1350.0.

Business expectations

Surveys of business expectations have been available to decision makers for a number of years from several sources. These surveys provided *qualitative* indicators in the form of the net proportion of businesses expecting a rise or fall in future business conditions. Since the December quarter 1993, the ABS has been compiling a *quantitative* indicator of business expectations in the form of an expected weighted aggregate change in a range of economic variables. These data are available on a quarterly basis in *Australian Business Expectations* (Cat. no. 5250.0).

South Australia, Short-term outlook expected aggregate change

.....

	EXPECTED AGGREGATE CHANGE OVER THE PREVIOUS QUARTER.....				
	Jun qtr 1998	Sep qtr 1998	Dec qtr 1998	Mar qtr 1999	Jun qtr 1999
<i>Business performance indicators</i>	%	%	%	%	%
<b>Trading performance</b>					
Operating income	1.9	2.0	0.4	0.4	4.9
Selling prices	0.5	0.4	0.4	0.3	0.1
Profit	2.9	12.4	-16.0	6.9	37.5
<b>Investment</b>					
Capital expenditure	9.8	2.6	0.4	-4.9	3.8
Stocks	0.2	-2.4	-0.4	-1.3	-0.8
<b>Employment</b>					
Full time equivalent	-0.1	-1.2	1.0	-0.8	0.5

*Short term*—South Australian businesses expect an increase of 4.9% in operating income in the June quarter 1999 compared with the March quarter 1999 whilst the Australian rate was 1.8%. The investment component for South Australia was expected to increase 3.8% for capital expenditure compared with a 2.9% increase for Australia whilst full-time employment levels were expected to rise 0.5% for South Australia and 0.3% for Australia.

South Australia, Medium-term outlook expected aggregate change

EXPECTED AGGREGATE CHANGE OVER THE  
SAME QUARTER OF THE PREVIOUS YEAR.....

	Mar qtr 1999	Jun qtr 1999	Sep qtr 1999	Dec qtr 1999	Mar qtr 2000
<i>Business performance indicators</i>	%	%	%	%	%
<b>Trading performance</b>					
Operating income	2.7	3.4	2.8	2.7	3.8
Selling prices	0.7	0.8	1.0	0.8	0.3
Profit	22.7	20.9	-0.6	10.2	27.4
<b>Investment</b>					
Capital expenditure	-2.0	8.6	-6.0	22.2	0.6
Stocks	0.2	0.3	1.8	-0.2	0.3
<b>Employment</b>					
Full time equivalent	-1.3	-0.5	0.6	0.3	0.4

*Medium term*—Businesses in South Australia expect operating income in the March quarter 2000 to be 3.8% above March quarter 1999. Capital expenditure is expected to increase by 0.6% whilst employment indicators are showing an increase of 0.4%. The Australian data shows a 0.6% increase in capital expenditure and a 0.2% fall in employment levels.

# LIST OF TABLES

Page

## TABLES

1	Statistical summary	24
	Time series	
2	State accounts—current prices	26
3	State accounts—chain volume measures 1996–97	27
4	Merchandise exports by selected commodity group	28
5	Merchandise exports by selected countries	29
6	Merchandise exports by industry of origin	30
7	Merchandise imports by selected commodity group	31
8	Turnover of retail establishments by industry	32
9	New motor vehicle registrations by type of vehicle	33
10	Actual private new capital expenditure by selected industry and type of asset	34
11	Tourist accommodation	35
12	Building approvals	36
13	Building commencements	37
14	Value of building work done during period	38
15	Production, livestock products and selected commodities	39
16	Consumer price index, by group—Adelaide	40
17	Average retail prices of selected consumer items—Adelaide	41
18	Estimated resident population and components of population change	42
19	Civilian labour force status	43
20	Civilian labour force, unemployment and participation rates	44
21	Average weekly earnings of employees	45
22	Finance commitments	46

# 1 STATISTICAL SUMMARY

Indicator	Unit	Period	SOUTH AUSTRALIA.....			AUSTRALIA.....				
			Number	% change from.....		Number	% change from.....		SA as a % of Aust.	Source index
				Previous period	Same period previous year		Previous period	Same period previous year		
<b>State accounts</b>										
Domestic final demand										
Current prices trend	\$m	Dec qtr 98	10 336	0.6	3.5	149 663	1.5	6.4	6.9	(1)
Chain volume measures trend	\$m	Dec qtr 98	10 038	0.2	1.5	145 246	1.1	4.5	6.9	(1)
Private final consumption expenditure										
Current prices trend	\$m	Dec qtr 98	6 385	1.3	6.0	87 464	1.6	5.9	7.3	(1)
Chain volume measures trend	\$m	Dec qtr 98	6 223	0.9	4.3	84 940	1.3	4.2	7.3	(1)
Private gross fixed capital formation										
Current prices trend	\$m	Dec qtr 98	1 524	-4.7	-5.2	27 309	-1.6	1.7	5.6	(1)
Chain volume measures trend	\$m	Dec qtr 98	1 471	-5.2	-7.6	26 867	-1.6	0.8	5.5	(1)
Compensation of employees										
Current prices trend	\$m	Dec qtr 98	4 728	0.0	0.0	71 747	1.8	7.1	6.6	(1)
<b>International accounts</b>										
Exports	\$m	Feb 99	405.5	8.1	11.4	5 853.3	-0.4	-8.0	6.9	(2)
Imports	\$m	Feb 99	302.0	-1.5	-3.9	7 117.2	-1.6	2.3	4.2	(2)
<b>Consumption and investment</b>										
Retail turnover										
Current prices original	\$m	Feb 99	779.8	-11.3	5.2	10 671.5	-10.2	7.3	7.3	(3)
Current prices trend	\$m	Feb 99	892.2	0.4	5.1	12 030.1	0.8	6.8	7.4	(3)
1996-97 chain volume measures	\$m	Dec qtr 98	2 898.2	16.7	5.4	38 213.4	15.8	2.7	7.6	(3)
New motor vehicle registrations										
Original	no.	Feb 99	3 923	28.8	-1.4	60 330	20.4	0.2	6.5	(4)
Trend	no.	Feb 99	4 061	-0.5	-4.2	65 278	-0.3	1.6	6.2	(4)
Private new capital expenditure										
Current prices original	\$m	Dec qtr 98	665	10.7	-30.2	11 998	3.2	-6.3	5.5	(5)
Current prices trend	\$m	Dec qtr 98	581	-13.7	-29.3	11 492	-2.3	-0.1	5.1	(5)
Private new capital expenditure	\$m	1997-98	3 193	..	23.8	46 220	..	5.4	6.9	(5)
Takings, licensed hotels, motels, guest houses and apartments with facilities	\$m	Dec qtr 98	49.8	17.1	9.8	1 043.2	4.5	5.7	4.8	(6)
<b>Production</b>										
Dwelling unit approvals										
Original	no.	Feb 99	607	36.7	-8.9	12 030	21.9	4.0	5.0	(7)
Trend	no.	Feb 99	641	2.8	1.9	13 032	0.7	-3.1	4.9	(7)
Dwelling units commenced	no.	Dec qtr 98	1 932	-2.4	1.4	36 174	-8.9	-6.5	5.3	(8a)
Value of non-residential building approvals	\$m	Feb 99	118.4	74.1	182.6	1 197.2	19.1	2.7	9.9	(7)
Value of total building activity										
Commenced	\$m	Dec qtr 98	390.6	11.4	0.7	8 054.4	-4.9	-6.1	4.8	(8)
Work done	\$m	Dec qtr 98	383.0	-0.2	-2.0	9 167.2	5.6	10.6	4.2	(8)
Work yet to be done	\$m	Dec qtr 98	334.9	7.6	0.0	12 934.9	-6.2	5.4	2.6	(8)
Value of engineering construction work done	\$m	Dec qtr 98	245.9	0.6	-17.8	4,650.0	7.1	11.7	5.3	(9)
Manufacturing production										
Red meat	tonnes	Dec qtr 98	48 996	17.7	-11.7	752 757	1.1	3.2	6.5	(10)
Mineral exploration expenditure (other than for petroleum)	\$m	Dec qtr 98	8.9	-29.4	-21.9	239.6	1.6	-15.0	3.7	(12)



Indicator	Unit	Period	SOUTH AUSTRALIA.....			AUSTRALIA.....			SA as a % of Aust.	Source index
			Number	% change from.....		Number	% change from .....			
				Previous period	Same period previous year		Previous period	Same period previous year		
<b>Prices</b>										
CPI – All groups	1989–90=100	Dec qtr 98	123.6	0.5	2.0	121.9	0.5	1.6	..	(13)
Price index of materials used in house building	1989–90=100	Mar qtr 99	125.1	-0.1	1.1	119.5	-0.2	0.7	..	(14)
Price index of materials used in building other than houses	1989–90=100	Mar qtr 99	115.6	0.0	0.5	115.2	0.0	1.0	..	(15)
Price index of established houses	1989–90=100	Dec qtr 98	113.0	-0.1	2.0	129.0	1.7	6.4	..	(16)
Price index of project homes	1989–90=100	Dec qtr 98	116.2	1.8	3.3	112.3	0.8	2.1	..	(16)
<b>Labour force and demography</b>										
Population (resident at end qtr)	'000	Sep qtr 98	1 488.8	0.1	0.5	18 813.0	0.3	1.3	7.9	(17)
Short-term overseas visitor arrivals	no.	Jan 99	8 669	-34.2	14.3	350 977	-23.3	1.4	2.5	(21)
Short-term resident departures	no.	Jan 99	8 993	-32.3	-4.9	232 716	-26.8	12.2	3.9	(21)
<b>Labour force</b>										
Original	'000	Mar 99	725.6	0.0	1.6	9 433.8	0.0	1.2	7.7	(18)
Trend	'000	Mar 99	724.0	0.0	1.6	9 394.4	0.0	1.2	7.7	(18)
<b>Employed persons</b>										
Original	'000	Mar 99	659.3	0.4	2.9	8 697.3	0.6	2.1	7.6	(18)
Trend	'000	Mar 99	658.9	0.1	2.6	8 700.8	0.1	1.9	7.6	(18)
<b>Participation rate</b>										
Original(a)	%	Mar 99	60.7	0.1	0.6	63.2	-0.1	-0.1	..	(18)
Trend(a)	%	Mar 99	60.6	-0.2	0.4	62.9	-0.1	-0.2	..	(18)
<b>Unemployment rate</b>										
Original(a)	%	Mar 99	9.1	-0.4	-1.2	7.8	-0.5	-0.8	..	(18)
Trend(a)	%	Mar 99	9.0	-0.1	-0.9	7.4	0.0	-0.7	..	(18)
Job vacancies	'000	Feb 99	4.2	-12.5	27.3	66.6	-14.0	-11.8	6.3	(19)
Average weekly overtime per employee working overtime	hours	Feb 99	5.74	-0.7	6.8	7.10	3.9	5.7	..	(19)
	'000 working days lost									
Industrial disputes	days lost	Dec 98	4.6	187.5	1,050.0	50.5	32.2	107.8	9.1	(20)
<b>Incomes</b>										
<b>Average weekly earnings (full-time adults; ordinary time)</b>										
Original	\$	Nov 98	702.50	1.1	7.3	741.30	0.7	4.2	..	(22)
Trend	\$	Nov 98	702.80	1.3	5.6	742.60	1.0	4.2	..	(22)
<b>Wage cost index (Total hourly rate excluding bonuses)</b>										
	Sep 1997=100	Dec qtr 98	103.8	0.6	3.0	103.9	0.6	3.1	..	(23)
<b>Financial markets</b>										
<b>Secured housing finance</b>										
Personal	\$m	Feb 99	283.0	25.2	7.2	5 163.0	23.1	10.2	5.5	(24)
<b>Finance commitments</b>										
Personal	\$m	Feb 99	254.5	7.7	21.5	3 604.1	10.9	10.6	7.1	(25)
Commercial	\$m	Feb 99	504.3	54.9	23.2	12 499.2	18.6	-6.4	4.0	(25)
Lease	\$m	Feb 99	19.6	-10.4	5.4	674.9	24.2	1.3	2.9	(25)
<b>Interest rates</b>										
Banks new housing loans(a)	%	Mar 99	..	..	..	6.50	0.0	-0.2	..	(26)
<b>Banks business loans(a)</b>										
Small, medium business(b)	%	Mar 99	..	..	..	7.55	0.0	-1.2	..	(26)
Large business	%	Mar 99	..	..	..	7.95	0.0	-0.5	..	(26)

(a) Change is shown in terms of percentage points.

(b) Rate for business loans over \$50,000

Period	EXPENDITURE.....				GROSS FIXED CAPITAL FORMATION.....		
	Households	General Government	Private	Public	State final demand	Gross State product (I)	Compensation of employees
ANNUAL (\$m)							
1992-93	19 538	6 456	4 399	1 523	31 916	30 593	15 131
1993-94	20 400	7 118	4 459	1 356	33 333	32 145	16 145
1994-95	21 475	7 196	5 541	1 421	35 633	33 272	16 587
1995-96	22 617	7 306	5 177	1 185	36 285	35 760	17 518
1996-97	22 920	7 358	5 773	1 273	37 324	36 405	18 140
1997-98	24 294	7 777	6 679	1 289	40 039	38 629	18 902
PERCENTAGE CHANGE FROM PREVIOUS YEAR							
1992-93	2.1	3.3	3.2	-6.7	2.1	4.4	3.2
1993-94	4.4	10.3	1.4	-11.0	4.4	5.1	6.7
1994-95	5.3	1.1	24.3	4.8	6.9	3.5	2.7
1995-96	5.3	1.5	-6.6	-16.6	1.8	7.5	5.6
1996-97	1.3	0.7	11.5	7.4	2.9	1.8	3.6
1997-98	6.0	5.7	15.7	1.3	7.3	6.1	4.2
QUARTERLY, ORIGINAL (\$m)							
<b>1997-98</b>							
September	5 908	1 847	1 524	308	9 586	n.a.	4 710
December	6 346	1 940	1 869	375	10 530	n.a.	4 906
March	5 892	1 873	1 640	207	9 612	n.a.	4 587
June	6 148	2 117	1 646	400	10 311	n.a.	4 699
<b>1998-99</b>							
September	6 287	2 028	1 574	276	10 166	n.a.	4 761
December	6 734	2 088	1 670	346	10 838	n.a.	4 842
QUARTERLY, TREND (\$m)							
<b>1997-98</b>							
September	5 916	1 905	1 609	349	9 779	n.a.	4 691
December	6 026	1 937	1 687	332	9 982	n.a.	4 730
March	6 128	1 967	1 725	302	10 122	n.a.	4 738
June	6 220	2 008	1 689	294	10 211	n.a.	4 732
<b>1998-99</b>							
September	6 306	2 047	1 599	326	10 279	n.a.	4 729
December	6 385	2 077	1 524	357	10 336	n.a.	4 728
PERCENTAGE CHANGE FROM PREVIOUS QUARTER, TREND							
<b>1997-98</b>							
September	1.8	2.2	5.9	2.9	2.6	..	1.4
December	1.9	1.7	4.8	-4.9	2.1	..	0.8
March	1.7	1.5	2.3	-9.0	1.4	..	0.2
June	1.5	2.1	-2.1	-2.6	0.9	..	-0.1
<b>1998-99</b>							
September	1.4	1.9	-5.3	10.9	0.7	..	-0.1
December	1.3	1.5	-4.7	9.5	0.6	..	0.0

Period	FINAL CONSUMPTION EXPENDITURE.....		GROSS FIXED CAPITAL FORMATION.....			State final demand	Gross State product(I)
	Households	General Government	Private	Public			
ANNUAL (\$m)							
1992-93	20 604	6 930	4 313	1 516	33 333	33 150	
1993-94	21 110	7 304	4 290	1 316	33 982	34 035	
1994-95	22 112	7 402	5 285	1 402	36 195	33 924	
1995-96	22 905	7 401	4 094	949	36 388	35 847	
1996-97	22 920	7 358	5 774	1 273	37 324	36 405	
1997-98	24 003	7 683	6 603	1 283	39 575	38 092	
PERCENTAGE CHANGE FROM PREVIOUS YEAR							
1992-93	-1.0	1.5	0.4	-7.4	-0.5	2.5	
1993-94	2.5	5.4	-0.5	-13.2	1.9	2.7	
1994-95	4.7	1.3	23.2	6.5	6.5	-0.3	
1995-96	3.6	0.0	-22.5	-32.3	0.5	5.7	
1996-97	0.1	-0.6	41.0	34.1	2.6	1.6	
1997-98	4.7	4.4	14.4	0.8	6.0	4.6	
QUARTERLY, ORIGINAL (\$m)							
<b>1997-98</b>							
September	5 862	1 847	1 539	296	9 545	n.a.	
December	6 289	1 908	1 862	378	10 437	n.a.	
March	5 817	1 849	1 611	208	9 484	n.a.	
June	6 035	2 080	1 591	401	10 106	n.a.	
<b>1998-99</b>							
September	6 143	1 955	1 531	269	9 897	n.a.	
December	6 567	2 024	1 626	322	10 540	n.a.	
QUARTERLY, TREND (\$m)							
<b>1997-98</b>							
September	5 879	1 896	1 618	345	9 739	n.a.	
December	5 969	1 917	1 678	330	9 894	n.a.	
March	6 042	1 934	1 693	302	9 971	n.a.	
June	6 107	1 963	1 645	288	10 002	n.a.	
<b>1998-99</b>							
September	6 169	1 989	1 551	313	10 020	n.a.	
December	6 223	2 001	1 471	337	10 038	n.a.	
PERCENTAGE CHANGE FROM PREVIOUS QUARTER, TREND							
<b>1997-98</b>							
September	1.6	1.8	5.5	2.7	2.3	..	
December	1.5	1.1	3.7	-4.3	1.6	..	
March	1.2	0.9	0.9	-8.5	0.8	..	
June	1.1	1.5	-2.8	-4.6	0.3	..	
<b>1998-99</b>							
September	1.0	1.3	-5.7	8.7	0.2	..	
December	0.9	0.6	-5.2	7.7	0.2	..	

(a) Reference year for chain volume measures is 1996-97.

## 4

## MERCHANDISE EXPORTS, By Selected Commodity Group(a)

<i>Period</i>	<i>Meat and meat preparations</i>	<i>Cereals and cereal preparations</i>	<i>Wine</i>	<i>Wool and sheepskins</i>	<i>Machinery</i>	<i>Metals and metal manu- factures</i>	<i>Fish and crustaceans</i>	<i>Road vehicles, parts and accessories</i>	<i>Petroleum and petroleum products</i>	<i>Total</i>
	\$'000	\$'000	\$'000	\$'000	\$'000	\$'000	\$'000	\$'000	\$'000	\$'000
ANNUAL										
1992-93	282 181	573 375	192 255	318 989	211 426	490 594	154 608	338 359	372 445	3 760 602
1993-94	324 796	436 517	238 366	290 963	223 760	462 355	186 861	351 229	276 473	3 889 783
1994-95	307 785	261 052	250 527	301 645	285 309	571 094	191 386	332 321	285 310	3 829 336
1995-96	244 508	713 092	318 534	240 148	340 205	610 899	196 629	249 237	220 915	4 498 532
1996-97	182 478	745 227	397 949	260 974	378 923	542 204	191 093	655 916	286 458	5 012 652
1997-98	218 237	527 689	564 093	287 823	401 749	574 408	236 352	479 419	237 825	4 978 833
MONTHLY										
<b>1997-98</b>										
September	15 556	27 715	62 570	24 139	38 751	50 905	18 769	18 938	26 927	383 290
October	17 450	10 488	62 258	23 438	26 461	37 876	23 617	39 356	10 935	360 816
November	21 311	8 737	33 344	29 856	41 143	61 843	18 039	83 677	18 110	454 693
December	22 742	67 159	36 065	35 568	38 306	40 932	13 637	72 253	33 679	482 272
January	15 469	92 923	25 835	20 260	21 783	56 613	24 571	15 137	12 427	368 261
February	21 174	45 383	43 674	17 710	27 617	41 123	18 253	19 097	18 197	363 980
March	23 933	62 521	55 440	26 154	37 500	51 720	22 850	37 642	19 792	474 796
April	20 323	71 491	50 539	16 054	30 937	48 037	21 581	24 260	12 089	410 108
May	19 757	36 499	58 198	28 786	41 200	44 539	18 447	30 792	18 406	440 951
June	16 188	67 210	52 876	17 049	25 411	49 813	21 084	24 268	13 434	412 631
<b>1998-99</b>										
July	11 886	41 106	48 323	17 802	37 239	36 741	23 828	44 144	8 909	388 182
August	12 036	57 675	54 365	14 136	30 391	51 467	30 657	43 037	20 669	455 316
September	17 705	46 101	70 084	21 737	30 243	39 816	28 826	82 634	12 086	473 948
October	20 292	37 462	72 266	23 109	28 835	39 298	16 321	45 576	19 012	418 769
November	23 420	12 520	40 014	23 410	33 811	44 055	15 738	76 332	8 740	398 256
December	21 798	84 612	48 371	21 800	38 819	46 020	18 732	72 038	22 904	514 445
January	12 472	93 036	39 131	10 407	20 616	32 232	20 616	17 334	3 544	375 084
February	18 865	45 298	50 188	16 922	28 828	47 475	20 718	23 959	9 077	405 482

(a) Final stage of production in South Australia.

## 5

## MERCHANDISE EXPORTS, By Selected Countries(a)

Period	EUROPEAN COMMUNITY.....					EAST ASIA.....				
	<i>United States of America</i>	<i>Middle East</i>	<i>United Kingdom</i>	<i>Total European Community</i>	<i>New Zealand</i>	<i>Japan</i>	<i>China</i>	<i>Hong Kong</i>	<i>ASEAN</i>	<i>Total East Asia</i>
	\$'000	\$'000	\$'000	\$'000	\$'000	\$'000	\$'000	\$'000	\$'000	\$'000
ANNUAL										
1992-93	352 764	314 049	237 520	594 701	288 421	649 684	208 135	171 803	487 174	1 820 065
1993-94	393 611	280 499	263 092	571 047	311 999	625 481	220 211	165 163	533 977	1 898 975
1994-95	329 878	184 342	246 118	553 051	376 262	682 937	177 875	193 014	551 433	2 004 013
1995-96	279 555	525 348	287 727	691 996	376 628	672 885	293 360	202 307	572 529	2 057 945
1996-97	707 871	563 409	304 645	641 308	382 103	611 870	244 917	234 547	614 481	2 030 435
1997-98	632 087	394 514	424 253	839 671	354 724	612 223	331 488	239 651	479 180	2 009 719
MONTHLY										
<b>1997-98</b>										
September	25 569	14 786	43 947	79 167	31 032	64 737	22 139	22 409	53 570	182 763
October	26 279	10 465	55 190	89 953	41 159	52 538	27 453	10 146	41 844	149 685
November	92 792	20 278	26 755	56 937	25 983	65 589	33 375	28 165	65 284	224 741
December	80 392	41 986	27 798	59 759	17 406	54 762	33 218	25 272	51 166	196 158
January	19 822	50 590	16 660	36 534	23 869	39 153	24 539	27 258	33 374	154 303
February	33 828	32 808	28 219	68 122	29 889	36 608	36 830	23 072	19 272	136 147
March	63 876	57 910	33 353	75 576	37 792	48 436	37 418	21 220	38 137	178 953
April	38 257	52 361	39 893	76 781	35 943	45 057	12 599	14 654	20 240	126 329
May	43 378	27 970	46 314	97 519	32 101	51 107	28 785	20 116	17 803	153 095
June	52 213	30 122	35 019	66 245	31 172	55 368	22 009	14 993	25 672	153 240
<b>1998-99</b>										
July	49 983	36 832	37 794	64 806	36 659	45 130	11 003	19 773	24 087	123 097
August	34 075	33 052	45 878	79 204	33 707	73 436	23 384	16 545	44 407	179 616
September	87 466	53 605	47 456	80 289	32 186	67 693	26 358	16 476	23 423	154 849
October	39 435	43 420	50 012	82 334	31 638	39 683	33 269	20 642	28 200	142 311
November	85 488	33 540	23 357	41 235	29 456	30 424	39 460	19 539	39 088	158 871
December	72 020	108 883	31 536	80 127	31 461	50 270	17 915	25 450	37 351	168 942
January	25 437	91 222	27 983	60 674	20 892	25 188	31 077	16 097	18 986	112 247
February	32 725	39 982	32 004	74 824	28 701	51 293	19 535	20 371	35 336	152 812

(a) Final stage of production in South Australia.

## MANUFACTURING.....

Period	Agriculture, forestry and fishing	Mining	Food, beverages and tobacco	Petroleum, coal, chemical associated product	Metal product	Machinery and equipment	Other manu- facturing	Other industries/ confidential	Total
	\$'000	\$'000	\$'000	\$'000	\$'000	\$'000	\$'000	\$'000	\$'000
ANNUAL									
1992-93	883 725	294 586	766 518	195 387	509 303	641 930	178 726	290 427	3 760 602
1993-94	733 014	245 247	884 737	180 147	475 060	665 066	208 573	497 938	3 889 783
1994-95	592 129	268 537	886 337	186 661	584 838	711 529	243 314	355 991	3 829 336
1995-96	1 014 521	226 309	978 332	172 285	639 267	674 131	226 496	567 191	4 498 532
1996-97	1 067 084	205 433	981 918	290 361	569 715	1 140 136	229 503	528 502	5 012 652
1997-98	946 606	137 851	1 205 081	292 175	615 344	994 516	262 797	524 462	4 978 833
MONTHLY									
<b>1997-98</b>									
September	55 954	22 149	115 717	24 156	55 582	65 691	21 959	22 078	383 290
October	43 747	1 722	119 482	18 055	39 145	73 873	19 014	45 776	360 816
November	45 830	16 715	89 418	25 488	67 645	134 105	22 038	53 454	454 693
December	101 555	28 936	88 087	26 808	45 353	121 927	21 840	47 765	482 272
January	116 264	6 767	77 125	17 938	58 347	43 235	18 390	30 195	368 261
February	77 088	805	91 561	25 843	42 638	56 040	19 488	50 516	363 980
March	110 422	13 279	116 808	23 588	55 768	86 302	29 905	38 724	474 796
April	94 690	896	105 811	22 179	51 716	64 034	20 316	50 466	410 108
May	70 549	3 524	118 987	30 653	49 662	84 612	23 947	59 017	440 951
June	98 738	10 307	105 051	24 871	52 139	59 884	17 105	44 537	412 631
<b>1998-99</b>									
July	80 391	916	95 544	16 951	42 744	92 690	17 418	41 528	388 182
August	88 413	8 723	98 298	34 630	53 203	90 632	19 941	61 475	455 316
September	77 554	1 066	112 590	26 209	40 577	122 152	21 886	71 914	473 948
October	70 620	9 066	121 024	27 700	41 345	85 507	21 252	42 255	418 769
November	45 312	14 644	86 095	19 305	48 132	123 264	20 329	41 175	398 256
December	117 056	7 760	101 445	32 613	51 949	120 353	22 642	60 627	514 445
January	118 334	1 112	77 430	13 331	33 006	46 429	17 812	67 631	375 084
February	100 967	9 484	99 144	19 177	49 794	63 007	20 481	43 429	405 482

(a) Final stage of production in South Australia.

## 7

## MERCHANDISE IMPORTS, By Selected Commodity Group(a)

<i>Period</i>	<i>Food, beverages and tobacco</i>	<i>Petroleum and petroleum products</i>	<i>Chemicals</i>	<i>Textiles</i>	<i>Metals and metal manufactures</i>	<i>Machinery</i>	<i>Road, vehicles, parts and accessories</i>	<i>Other manufactured goods</i>	<i>Total</i>
	\$'000	\$'000	\$'000	\$'000	\$'000	\$'000	\$'000	\$'000	\$'000
ANNUAL									
1992-93	91 756	570 334	186 001	57 434	255 924	609 212	661 714	521 723	3 068 122
1993-94	99 177	404 626	200 225	60 172	160 937	595 238	663 617	484 590	2 803 446
1994-95	115 930	330 430	220 536	64 524	214 432	695 038	749 658	563 368	3 099 510
1995-96	118 237	346 397	254 102	76 847	213 487	675 869	546 445	728 096	3 114 309
1996-97	136 695	505 633	225 187	79 708	223 259	868 346	538 690	695 238	3 413 043
1997-98	148 771	445 218	274 743	93 816	280 562	1 061 260	772 204	739 266	3 940 197
MONTHLY									
<b>1997-98</b>									
September	13 380	61 141	13 489	7 031	21 941	79 644	58 896	80 302	343 992
October	15 074	2 052	12 983	8 211	22 588	76 605	67 992	56 732	271 659
November	14 009	67 061	16 244	7 528	21 290	75 564	55 373	51 324	321 543
December	13 857	32 306	22 823	6 607	21 520	115 623	58 610	58 122	342 164
January	13 497	29 721	39 180	8 063	24 670	96 949	54 033	55 492	332 475
February	10 608	39 221	26 084	8 195	27 664	69 791	53 601	70 676	314 306
March	11 294	41 325	31 280	8 678	26 177	86 622	70 446	70 667	357 051
April	10 012	22 090	38 574	9 335	21 137	113 439	61 182	63 078	350 581
May	11 224	38 780	27 490	8 945	21 394	74 468	56 026	60 750	310 724
June	13 086	15 049	18 431	8 041	25 140	89 988	70 652	62 513	313 741
<b>1998-99</b>									
July	14 293	23 350	13 006	9 514	26 572	95 455	71 756	64 569	329 710
August	15 000	18 697	14 930	8 217	24 495	83 417	67 746	66 505	308 231
September	14 111	12 616	22 609	8 647	25 448	73 876	63 420	63 218	292 080
October	15 828	11 640	18 154	9 116	23 219	82 586	78 648	59 600	310 781
November	15 327	36 487	23 601	7 877	21 420	75 556	70 411	71 955	334 593
December	13 026	16 970	18 804	6 467	19 204	75 014	64 423	59 276	283 665
January	12 745	17 413	35 268	6 819	21 562	79 681	58 847	59 242	306 701
February	11 564	31 596	29 809	7 369	19 694	64 604	68 738	56 271	301 955

(a) Goods released from Customs control in South Australia.

## 8

## TURNOVER OF RETAIL ESTABLISHMENTS, By Industry

Period	Food retailing	Department stores	Clothing and soft good retailing	Household good retailing	Recreational good retailing	Other retailing	Hospitality and services	Total
ANNUAL (\$m)								
1993-94	3 253.3	1 107.8	479.0	917.8	378.1	684.0	1 338.8	8 158.8
1994-95	3 477.3	1 128.8	538.0	959.6	383.8	793.5	1 654.4	8 935.4
1995-96	3 786.4	1 138.6	546.6	1 025.8	431.2	902.7	1 762.1	9 593.4
1996-97	4 064.9	1 120.9	467.1	936.9	424.8	792.8	1 648.0	9 455.7
1997-98	4 454.4	1 073.7	541.0	1 084.2	413.3	928.2	1 502.7	10 051.4
MONTHLY, ORIGINAL (\$m)								
<b>1997-98</b>								
December	418.2	160.5	58.3	121.3	52.5	107.7	148.4	1 066.7
January	396.1	93.8	45.3	94.2	33.4	77.0	116.1	856.0
February	344.9	76.0	33.0	81.9	29.1	69.3	107.4	741.5
March	373.6	78.4	42.9	85.2	34.2	75.8	120.4	810.5
April	385.7	91.6	49.7	81.6	31.8	80.9	127.3	848.6
May	381.2	86.6	50.0	89.3	31.7	86.1	131.0	855.8
June	365.4	80.0	46.6	89.8	32.5	76.8	124.3	815.5
<b>1998-99</b>								
July	390.1	96.3	48.9	84.2	34.6	77.9	133.9	865.8
August	380.6	79.8	43.2	82.7	32.0	76.6	130.8	825.5
September	387.9	82.6	45.1	81.0	35.4	80.8	136.9	849.8
October	421.8	89.7	50.5	91.8	36.0	84.6	150.5	925.0
November	399.1	101.1	48.1	91.5	35.2	86.7	135.8	897.4
December	473.0	170.9	64.8	116.3	51.8	118.3	162.4	1 157.4
January	420.2	78.0	43.0	94.3	30.0	79.4	134.6	879.5
February	376.7	65.5	36.3	77.2	28.1	75.5	120.5	779.8
MONTHLY, TREND (\$m)								
<b>1997-98</b>								
December	368.5	93.2	44.1	93.0	33.4	78.7	117.7	832.7
January	373.5	93.5	44.4	93.2	33.4	80.7	117.9	840.7
February	378.4	93.8	45.0	92.9	33.6	81.9	120.0	849.2
March	382.4	93.7	45.8	92.1	34.1	82.5	123.7	856.7
April	385.3	93.5	46.5	91.0	34.7	82.5	128.0	862.6
May	387.2	92.9	47.3	89.7	35.3	82.2	132.7	867.2
June	389.1	92.4	47.9	88.6	35.9	81.5	136.8	871.7
<b>1998-99</b>								
July	391.2	92.0	48.4	87.5	36.2	81.0	139.5	875.4
August	393.7	91.9	48.7	86.7	36.2	81.0	140.4	878.6
September	396.3	91.9	48.6	86.5	35.9	81.7	139.4	880.3
October	399.5	91.6	48.2	87.1	35.1	83.1	137.4	881.9
November	403.1	91.3	47.6	88.4	34.2	84.5	134.9	883.9
December	406.8	91.1	47.1	89.8	33.3	85.5	132.6	886.1
January	410.3	90.9	46.6	91.1	32.5	86.3	130.8	888.6
February	413.4	91.3	46.3	92.1	31.9	86.8	129.6	892.2
PERCENTAGE CHANGE FROM PREVIOUS MONTH, TREND								
<b>1997-98</b>								
December	1.2	0.3	0.0	1.1	-0.9	3.3	-1.5	0.9
January	1.4	0.3	0.7	0.2	0.0	2.5	0.2	1.0
February	1.3	0.3	1.4	-0.3	0.6	1.5	1.8	1.0
March	1.1	-0.1	1.8	-0.9	1.5	0.7	3.1	0.9
April	0.8	-0.2	1.5	-1.2	1.8	0.0	3.5	0.7
May	0.5	-0.6	1.7	-1.4	1.7	-0.4	3.7	0.5
June	0.5	-0.5	1.3	-1.2	1.7	-0.9	3.1	0.5
<b>1998-99</b>								
July	0.5	-0.4	1.0	-1.2	0.8	-0.6	2.0	0.4
August	0.6	-0.1	0.6	-0.9	0.0	0.0	0.6	0.4
September	0.7	0.0	-0.2	-0.2	-0.8	0.9	-0.7	0.2
October	0.8	-0.3	-0.8	0.7	-2.2	1.7	-1.4	0.2
November	0.9	-0.3	-1.2	1.5	-2.6	1.7	-1.8	0.2
December	0.9	-0.2	-1.1	1.6	-2.6	1.2	-1.7	0.2
January	0.9	-0.2	-1.1	1.4	-2.4	0.9	-1.4	0.3
February	0.8	0.4	-0.6	1.1	-1.8	0.6	-0.9	0.4



Period	ORIGINAL.....			SEASONALLY ADJUSTED.....			TREND ESTIMATE.....		
	Passenger vehicles	Other vehicles	Total	Passenger vehicles	Other vehicles	Total	Passenger vehicles	Other vehicles	Total
ANNUAL									
1991-92	32 351	5 333	37 684	..	..	..	..	..	..
1992-93	32 894	5 577	38 471	..	..	..	..	..	..
1993-94	32 806	5 781	38 587	..	..	..	..	..	..
1994-95	35 830	6 736	42 566	..	..	..	..	..	..
1995-96	36 067	6 828	42 895	..	..	..	..	..	..
1996-97	36 146	6 970	43 116	..	..	..	..	..	..
1997-98	43 407	7 453	50 860	..	..	..	..	..	..
PERCENTAGE CHANGE FROM PREVIOUS YEAR									
1991-92	-6.9	-19.4	-8.9	..	..	..	..	..	..
1992-93	1.7	4.6	2.1	..	..	..	..	..	..
1993-94	-0.3	3.7	0.3	..	..	..	..	..	..
1994-95	9.2	16.5	10.3	..	..	..	..	..	..
1995-96	0.7	1.4	0.8	..	..	..	..	..	..
1996-97	0.2	2.1	0.5	..	..	..	..	..	..
1997-98	20.1	6.9	18.0	..	..	..	..	..	..
MONTHLY									
<b>1997-98</b>									
December	3 781	702	4 483	3 608	656	4 264	3 581	627	4 208
January	2 883	483	3 366	3 663	630	4 293	3 567	643	4 211
February	3 340	640	3 980	3 413	688	4 100	3 588	654	4 241
March	3 661	687	4 348	3 441	626	4 067	3 675	660	4 336
April	3 385	678	4 063	3 820	706	4 526	3 809	666	4 474
May	3 693	686	4 379	4 005	647	4 653	3 937	668	4 605
June	4 889	872	5 761	4 172	632	4 804	4 009	670	4 679
<b>1998-99</b>									
July	4 411	681	5 092	4 233	678	4 911	3 992	673	4 665
August	3 864	676	4 540	3 837	751	4 588	3 893	675	4 569
September	3 569	597	4 166	3 471	632	4 102	3 751	674	4 425
October	3 677	560	4 237	3 609	623	4 232	3 624	668	4 291
November	3 803	672	4 475	3 635	705	4 340	3 540	657	4 197
December	3 624	718	4 342	3 425	666	4 092	3 489	644	4 133
January	2 603	442	3 045	3 512	599	4 111	3 452	630	4 083
February	3 355	568	3 923	3 428	610	4 037	3 444	617	4 061
PERCENTAGE CHANGE FROM PREVIOUS MONTH									
<b>1997-98</b>									
December	3.2	30.7	6.8	-2.5	14.9	-0.1	-0.1	3.0	0.3
January	-23.8	-31.2	-24.9	1.5	-4.0	0.7	-0.4	2.6	0.1
February	15.9	32.5	18.2	-6.8	9.2	-4.5	0.6	1.7	0.7
March	9.6	7.3	9.2	0.8	-9.0	-0.8	2.4	0.9	2.2
April	-7.5	-1.3	-6.6	11.0	12.8	11.3	3.6	0.9	3.2
May	9.1	1.2	7.8	4.8	-8.4	2.8	3.4	0.3	2.9
June	32.4	27.1	31.6	4.2	-2.3	3.2	1.8	0.3	1.4
<b>1998-99</b>									
July	-9.8	-21.9	-11.6	1.5	7.3	2.2	-0.4	0.4	-0.3
August	-12.4	-0.7	-10.8	-9.4	10.8	-6.6	-2.5	0.3	-2.1
September	-7.6	-11.7	-8.2	-9.5	-15.8	-10.6	-3.6	-0.1	-3.2
October	3.0	-6.2	1.7	4.0	-1.4	3.2	-3.4	-0.9	-3.0
November	3.4	20.0	5.6	0.7	13.2	2.6	-2.3	-1.6	-2.2
December	-4.7	6.8	-3.0	-5.8	-5.5	-5.7	-1.4	-2.0	-1.5
January	-28.2	-38.4	-29.9	2.5	-10.1	0.5	-1.1	-2.2	-1.2
February	28.9	28.5	28.8	-2.4	1.8	-1.8	-0.2	-2.1	-0.5

Period	INDUSTRY.....			Total	TYPE OF ASSET.....	
	Mining	Manu- facturing	Other selected industries		New buildings and structures	Equipment, plant and machinery
ANNUAL (\$m)						
1992-93	218	564	739	1 522	416	1 105
1993-94	97	613	773	1 484	356	1 128
1994-95	115	829	1 162	2 106	351	1 755
1995-96	196	756	921	1 873	358	1 515
1996-97	489	840	1 251	2 580	594	1 985
1997-98	1 366	820	1 006	3 193	792	2 400
PERCENTAGE CHANGE FROM PREVIOUS YEAR						
1992-93	12.8	-26.1	10.6	-6.4	6.1	-10.4
1993-94	-55.5	8.7	4.6	-2.5	-14.5	2.0
1994-95	18.3	35.2	50.3	41.9	-1.4	55.6
1995-96	70.4	-8.8	-20.7	-11.1	2.0	-13.7
1996-97	149.5	11.1	35.8	37.7	65.9	31.0
1997-98	179.3	-2.4	-19.6	23.8	33.3	20.9
QUARTERLY, ORIGINAL (\$m)						
<b>1997-98</b>						
September	345	170	201	716	159	557
December	447	265	241	953	196	757
March	360	168	193	721	188	534
June	215	217	370	802	250	552
<b>1998-99</b>						
September	125	154	322	601	157	444
December	150	248	267	665	170	495
PERCENTAGE CHANGE FROM PREVIOUS QUARTER, ORIGINAL						
<b>1997-98</b>						
September	29.2	-23.1	-14.1	-0.6	-0.6	-1.1
December	29.6	55.9	19.9	33.1	23.3	35.9
March	-19.5	-36.6	-19.9	-24.3	-4.1	-29.5
June	-40.3	29.2	91.7	11.2	33.0	3.4
<b>1998-99</b>						
September	-41.9	-29.0	-13.0	-25.1	-37.2	-19.6
December	20.0	61.0	-17.1	10.6	8.3	11.5
QUARTERLY, TREND (\$m)						
<b>1997-98</b>						
September	n.a.	n.a.	n.a.	772	161	611
December	n.a.	n.a.	n.a.	822	187	635
March	n.a.	n.a.	n.a.	822	214	608
June	n.a.	n.a.	n.a.	762	214	548
<b>1998-99</b>						
September	n.a.	n.a.	n.a.	673	187	485
December	n.a.	n.a.	n.a.	581	156	425
PERCENTAGE CHANGE FROM PREVIOUS QUARTER, TREND						
<b>1997-98</b>						
September	..	..	..	10.6	2.5	12.9
December	..	..	..	6.5	16.1	3.9
March	..	..	..	0.0	14.4	-4.3
June	..	..	..	-7.3	0.0	-9.9
<b>1998-99</b>						
September	..	..	..	-11.7	-12.6	-11.5
December	..	..	..	-13.7	-16.6	-12.4

Period	HOTELS WITH FACILITIES.....			MOTELS AND GUESTHOUSES...			SERVICED APARTMENTS.....		
	Guest rooms	Room occupancy	Takings	Flats, units and houses	Room occupancy	Takings	Guest rooms	Room occupancy	Takings
	no.	%	\$'000	no.	%	\$'000	no.	%	\$'000
.....									
QUARTERLY									
<b>1996-97</b>									
June	3 819	54.1	18 460	5 197	50.3	16 835	624	61.4	2 624
September	3 875	56.2	19 193	5 179	51.3	17 420	624	57.9	2 714
December	3 855	61.3	22 156	5 225	57.9	19 960	626	67.3	3 269
<b>1997-98</b>									
June	4 048	53.6	19 048	5 136	52.8	17 773	750	59.4	3 551
September	4 048	57.2	21 068	5 112	51.7	17 805	740	56.3	3 667
December	4 053	63.0	24 954	5 135	58.1	19 990	888	66.0	4 884
.....									
PERCENTAGE CHANGE FROM PREVIOUS YEAR									
<b>1997-98</b>									
June	6.0	..	3.2	-1.2	..	5.6	20.2	..	35.3
September	4.5	..	9.8	-1.3	..	2.2	18.6	..	35.1
December	5.1	..	12.6	-1.7	..	0.2	41.9	..	49.4
.....									

Period	HOUSES.....		TOTAL DWELLING UNITS.....		Alterations and additions to residential building	Total residential building	Non-residential building	Total building
	Private sector	Total	Private sector	Total				
	no.	no.	no.	no.				
					\$m	\$m	\$m	\$m
ANNUAL								
1992-93	9 715	10 091	11 548	12 341	133	973	418	1 392
1993-94	9 474	9 905	11 046	11 777	122	961	375	1 336
1994-95	7 765	8 155	9 208	9 762	120	860	493	1 353
1995-96	4 938	5 117	5 760	5 968	119	588	566	1 155
1996-97	5 512	5 608	6 148	6 264	117	632	581	1 213
1997-98	6 187	6 380	6 997	7 215	128	758	602	1 360
MONTHLY, ORIGINAL								
<b>1997-98</b>								
February	542	545	663	666	15.6	72.6	41.9	114.5
March	623	671	686	738	10.7	74.3	53.8	128.1
April	461	472	491	502	9.6	53.6	34.6	88.3
May	515	527	588	602	9.2	64.4	38.2	102.6
June	610	641	771	810	10.2	80.3	36.5	116.8
<b>1998-99</b>								
July	654	660	893	901	11.8	90.4	40.2	130.6
August	528	536	622	634	10.6	69.1	72.1	141.2
September	600	625	717	742	13.1	116.5	46.9	163.5
October	518	542	561	585	10.8	66.3	40.5	106.9
November	540	553	587	606	12.4	70.4	58.3	128.7
December	489	496	556	563	10.0	60.3	53.5	113.7
January	361	371	434	444	9.5	55.1	68.0	123.1
February	494	510	591	607	12.4	70.6	118.4	189.0
MONTHLY, TREND								
<b>1997-98</b>								
February	543	558	612	629	10.0	64.4	39.7	104.1
March	548	562	624	641	9.8	65.3	38.1	103.4
April	548	563	639	656	9.9	67.1	37.1	104.2
May	545	559	654	670	10.1	70.3	37.3	107.5
June	540	555	664	678	10.3	74.2	38.6	112.8
<b>1998-99</b>								
July	537	552	663	679	10.5	77.4	40.3	117.7
August	534	551	651	670	10.6	78.7	44.1	122.8
September	532	551	628	651	10.7	77.9	49.8	127.7
October	528	547	603	628	10.8	75.4	56.0	131.4
November	523	543	590	615	11.2	72.9	62.2	135.1
December	521	541	591	617	11.7	71.3	67.9	139.2
January	521	541	599	623	12.4	70.6	72.5	143.2
February	521	540	617	641	13.1	71.2	75.4	146.7
PERCENTAGE CHANGE FROM PREVIOUS MONTH, TREND								
<b>1997-98</b>								
January	2.5	2.3	2.9	2.7	-1.7	1.5	-3.7	-0.6
February	1.8	1.6	2.3	2.3	-2.1	1.8	-2.9	-0.1
March	0.9	0.8	2.1	2.0	-1.3	1.3	-3.9	-0.7
April	0.1	0.1	2.4	2.2	0.6	2.7	-2.7	0.7
May	-0.6	-0.7	2.4	2.1	1.9	4.8	0.5	3.2
June	-0.9	-0.8	1.4	1.3	2.5	5.7	3.5	4.9
<b>1998-99</b>								
July	-0.6	-0.5	-0.1	0.1	1.8	4.2	4.5	4.3
August	-0.5	-0.2	-1.9	-1.4	0.6	1.7	9.4	4.3
September	-0.4	-0.1	-3.4	-2.8	0.6	-1.0	12.9	4.0
October	-0.9	-0.6	-4.0	-3.5	1.5	-3.1	12.5	3.0
November	-0.9	-0.7	-2.2	-2.0	3.3	-3.4	11.1	2.8
December	-0.3	-0.3	-0.3	0.2	4.9	-2.2	9.0	3.0
January	-0.1	-0.2	1.3	1.1	5.6	-0.9	6.9	2.9
February	0.0	-0.1	3.1	2.8	5.9	0.8	4.0	2.4

# 13

## BUILDING COMMENCEMENTS

Period	NEW HOUSES.....		TOTAL DWELLING UNITS(a).....				NON-RESIDENTIAL BUILDING.....		
	Private sector	Total	Private sector	Total	New residential building	Alterations and additions to residential building	Private sector	Total	Total building
	no.	no.	no.	no.	\$m	\$m	\$m	\$m	\$m
ANNUAL									
1992-93	9 122	9 416	10 889	11 646	816.2	122.4	205.5	458.7	1 397.2
1993-94	9 159	9 590	10 712	11 501	845.3	126.5	209.9	373.0	1 344.8
1994-95	7 745	8 210	9 132	9 796	765.5	125.3	251.7	518.5	1 409.3
1995-96	4 837	5 071	5 691	5 960	496.5	121.7	452.8	631.8	1 250.0
1996-97	5 057	5 112	5 727	5 789	496.3	116.9	423.4	568.8	1 181.9
1997-98	5 628	5 823	6 437	6 653	614.7	134.5	419.0	550.7	1 299.9
QUARTERLY									
<b>1996-97</b>									
December	1 245	1 262	1 513	1 530	133.8	33.8	85.3	113.2	280.8
March	1 099	1 102	1 242	1 247	106.3	26.2	76.6	121.2	253.6
June	1 522	1 541	1 670	1 691	147.5	30.7	193.5	230.2	408.4
<b>1997-98</b>									
September	1 354	1 402	1 489	1 541	131.9	31.6	84.5	112.3	275.8
December	1 531	1 588	1 841	1 906	179.8	33.8	139.2	174.1	387.7
March	1 409	1 436	1 617	1 648	150.1	38.7	68.1	95.2	284.0
June	1 334	1 397	1 490	1 558	152.9	30.4	134.5	169.1	352.4
<b>1998-99</b>									
September	1 563	1 610	1 927	1 980	184.7	35.0	89.5	131.1	350.7
December	1 611	1 666	1 858	1 932	228.0	33.7	90.1	128.9	390.6

(a) Includes conversions.

# 14

## VALUE OF BUILDING WORK DONE DURING PERIOD

Period	NEW HOUSES....		NEW RESIDENTIAL BUILDING.....		Alterations and additions to residential building	NON-RESIDENTIAL BUILDING.....		TOTAL BUILDING.....	
	Private sector	Total	Private sector	Total		Private sector	Total	Private sector	Total
	\$m	\$m	\$m	\$m		\$m	\$m	\$m	\$m
ANNUAL									
1992-93	647.2	660.9	743.8	780.6	127.1	297.9	570.9	1 166.3	1 478.6
1993-94	719.1	746.4	828.9	876.3	132.0	217.7	462.1	1 177.2	1 470.4
1994-95	659.6	693.6	766.1	816.4	129.4	271.6	476.9	1 164.3	1 422.7
1995-96	441.4	460.5	512.9	534.8	130.6	311.4	542.1	953.2	1 207.5
1996-97	433.9	438.9	485.2	490.4	122.2	444.2	663.3	1 049.8	1 275.9
1997-98	523.7	535.7	590.9	605.4	131.6	534.6	685.0	1 255.0	1 422.0
QUARTERLY									
<b>1996-97</b>									
December	109.1	110.6	121.3	122.8	35.4	119.6	189.8	276.0	348.0
March	99.9	100.3	114.1	114.6	26.8	100.8	147.8	241.6	289.2
June	127.6	128.7	140.5	141.7	32.0	140.4	181.9	312.8	355.6
<b>1997-98</b>									
September	122.5	125.8	136.3	139.9	32.9	149.8	186.7	318.5	359.4
December	134.0	137.7	152.3	157.1	36.2	157.7	197.7	345.2	391.0
March	130.5	132.8	147.4	149.9	31.4	119.1	149.2	297.7	330.4
June	135.9	139.4	154.5	158.5	31.2	112.3	151.5	297.9	341.1
<b>1998-99</b>									
September	150.8	155.8	175.8	180.9	39.8	135.5	162.9	350.1	383.6
December	147.9	151.6	181.8	186.0	39.8	118.7	157.2	340.1	383.0

Period	Pigmeat	Beef	Mutton	Lamb	Gas	Coal	Sawn timber(a)
	tonnes	tonnes	tonnes	tonnes	m MJ	tonnes	m <sup>3</sup>
ANNUAL							
1991-92	34 538	90 661	72 578	29 941	78 210	2 819 880	271 603
1992-93	38 153	96 338	65 689	39 334	83 000	2 753 610	317 096
1993-94	38 394	94 395	71 354	45 199	89 382	2 643 000	364 961
1994-95	32 063	99 108	66 759	36 147	86 123	2 554 560	392 349
1995-96	31 695	89 704	55 600	37 735	76 074	2 409 120	413 545
1996-97	29 842	85 478	51 778	34 890	76 495	2 633 820	333 691
1997-98	26 384	80 924	58 554	38 224	78 440	2 815 870	361 257

PERCENTAGE CHANGE FROM PREVIOUS YEAR							
1991-92	-10.6	4.2	10.9	-6.5	6.7	15.5	13.1
1992-93	10.5	6.3	-9.5	31.4	6.1	-2.4	16.7
1993-94	0.6	-2.0	8.6	14.9	7.7	-4.0	15.1
1994-95	-16.5	5.0	-6.4	-20.0	-3.6	-3.3	7.5
1995-96	-1.1	-9.5	-16.7	4.4	-11.7	-5.7	5.4
1996-97	-5.8	-4.7	-6.9	-7.5	0.6	9.3	-19.3
1997-98	-11.6	-5.3	13.1	9.6	2.5	6.9	8.3

QUARTERLY							
<b>1996-97</b>							
June	7 866	23 160	11 802	10 225	19 777	720 300	83 742
<b>1997-98</b>							
September	7 431	18 704	10 889	6 594	21 942	752 868	91 537
December	6 301	22 324	16 769	9 963	18 997	610 208	83 957
March	6 731	21 110	20 144	10 561	18 098	718 990	89 540
June	5 921	18 786	10 752	11 106	19 404	733 804	96 223
<b>1998-99</b>							
September	5 253	15 129	10 342	10 733	23 573	748 575	95 339
December	4 643	17 519	15 722	10 985	19 718	671 040	94 578

PERCENTAGE CHANGE FROM PREVIOUS MONTH/QUARTER							
<b>1996-97</b>							
June	13.9	8.1	-26.2	-36.1	10.2	5.2	22.4
<b>1997-98</b>							
September	-5.5	-19.2	-7.7	-35.5	10.9	4.5	9.3
December	-15.2	19.4	54.0	51.1	-13.4	-18.9	-8.3
March	6.8	-5.4	20.1	6.0	-4.7	17.8	6.6
June	-12.0	-11.0	-46.6	5.2	7.2	2.1	7.5
<b>1998-99</b>							
September	-11.3	-19.5	-3.8	-3.4	21.5	4.0	-0.9
December	-11.6	15.8	52.0	2.3	-16.4	-10.4	-0.8

(a) From Australian softwood logs only.

Period	Food	Clothing	Housing	Household equipment and operation	Transport- ation	Tobacco and alcohol	Health and personal care	Recreation and education	All groups
ANNUAL AVERAGE (1989-90 = 100)									
1992-93	109.3	107.0	94.3	107.6	115.0	131.2	134.9	110.7	111.2
1993-94	111.7	106.6	92.1	108.0	117.8	141.5	142.7	113.7	113.4
1994-95	115.1	104.9	97.8	109.2	120.2	148.9	151.3	116.3	116.9
1995-96	118.2	105.1	103.6	112.1	124.5	160.1	158.9	118.0	121.2
1996-97	120.8	105.5	98.9	113.4	124.6	165.3	165.4	121.1	122.3
1997-98	122.7	105.7	90.7	113.7	122.1	169.3	165.4	124.7	121.6
PERCENTAGE CHANGE FROM PREVIOUS YEAR, ANNUAL AVERAGE									
1992-93	3.1	1.6	-6.1	0.1	4.1	10.6	5.6	2.8	2.1
1993-94	2.2	-0.4	-2.3	0.4	2.4	7.9	5.8	2.7	2.0
1994-95	3.0	-1.6	6.2	1.1	2.0	5.2	6.0	2.2	3.1
1995-96	2.7	0.2	5.9	2.7	3.6	7.6	5.0	1.5	3.7
1996-97	2.2	0.3	-4.5	1.2	0.0	3.3	4.1	2.6	0.9
1997-98	1.6	0.2	-8.3	0.2	-1.9	2.4	0.0	3.0	-0.6
QUARTERLY (1989-90 = 100.0)									
<b>1997-98</b>									
September	122.0	105.4	92.2	113.6	123.2	167.2	158.6	123.7	121.2
December	122.0	106.2	90.2	113.6	122.3	168.8	164.1	123.6	121.2
March	122.9	105.1	89.9	113.7	121.2	170.7	167.8	125.5	121.7
June	123.7	105.9	90.3	113.9	121.8	170.5	171.1	126.1	122.4
<b>1998-99</b>									
September	125.9	105.3	91.2	113.7	121.8	170.7	171.8	125.9	123.0
December	128.2	105.4	91.9	113.9	121.3	171.4	170.9	126.5	123.6
PERCENTAGE CHANGE FROM SAME QUARTER OF PREVIOUS YEAR									
<b>1997-98</b>									
September	2.3	-0.1	-10.9	0.5	-1.0	1.5	-1.4	3.8	-0.8
December	1.1	0.2	-10.2	-0.2	-2.5	2.4	-0.5	3.2	-1.1
March	1.4	0.0	-7.8	0.4	-3.5	3.3	0.1	2.6	-0.7
June	1.5	0.7	-4.0	0.3	-0.7	2.4	1.8	2.6	0.4
<b>1998-99</b>									
September	3.2	-0.1	-1.1	0.1	-1.1	2.1	8.3	1.8	1.5
December	5.1	-0.8	1.9	0.3	-0.8	1.5	4.1	2.3	2.0
PERCENTAGE CHANGE FROM PREVIOUS QUARTER									
<b>1997-98</b>									
September	0.1	0.2	-2.0	0.0	0.4	0.4	-5.6	0.7	-0.6
December	0.0	0.8	-2.2	0.0	-0.7	1.0	3.5	-0.1	0.0
March	0.7	-1.0	-0.3	0.1	-0.9	1.1	2.3	1.5	0.4
June	0.7	0.8	0.4	0.2	0.5	-0.1	2.0	0.5	0.6
<b>1998-99</b>									
September	1.8	-0.6	1.0	-0.2	0.0	0.1	0.4	-0.2	0.5
December	1.8	0.1	0.8	0.2	-0.4	0.4	-0.5	0.5	0.5



## 17

## AVERAGE RETAIL PRICES OF SELECTED CONSUMER ITEMS—Adelaide

Item	Unit	QUARTER.....				
		Dec 1997	Mar 1998	June 1998	Sep 1998	Dec 1998
		cents	cents	cents	cents	cents
Milk, carton, supermarket sales	1 L	122	124	127	127	132
Cheese, processed, sliced, wrapped	500 g	323	322	323	335	312
Butter	500 g	164	167	175	164	175
Bread, white loaf, sliced, supermarket sales	680 g	161	163	165	169	167
Self-raising flour	2 kg	239	236	235	239	249
Beef						
Rump steak	1 kg	1 135	1 098	1 197	1 109	1 156
Corned silverside	1 kg	626	590	596	629	638
Lamb						
Leg	1 kg	565	535	534	554	565
Loin chops	1 kg	794	796	794	788	846
Forequarter chops	1 kg	534	575	577	551	582
Pork						
Leg	1 kg	622	618	601	576	571
Loin chops	1 kg	802	788	812	791	803
Chicken, frozen	1 kg	362	351	362	367	332
Bacon, middle rashers	250 g pkt	321	295	322	304	293
Sausages	1 kg	360	351	357	369	372
Potatoes	1 kg	111	104	69	62	86
Onions	1 kg	127	165	122	175	188
Peaches, canned	825 g	188	185	193	196	206
Eggs, 55g	doz.	239	235	238	240	245
Sugar, white	2 kg	185	183	201	210	202
Tea	250 g	182	183	217	214	220
Coffee, instant, jar	150 g	573	592	588	570	563
Margarine, polyunsaturated	500 g	144	142	141	161	172
Petrol						
Leaded	1 L	74.5	75.0	71.5	71.0	69.5
Unleaded	1 L	72.2	72.6	72.0	68.6	67.2

## NET MIGRATION.....

Period	Live births(a)	Deaths(a)	Natural increase	Interstate	Overseas(b)	Total increase	Population at end of period(c)
ANNUAL							
1992-93	19 686	11 163	8 468	-5 210	1 546	5 299	1 460 730
1993-94	20 036	11 743	8 006	-3 978	1 994	6 477	1 466 127
1994-95	19 569	11 501	7 953	-7 069	2 883	4 256	1 469 411
1995-96	18 959	11 294	7 500	-6 192	3 653	5 526	1 474 253
1996-97	18 945	11 683	6 951	-4 628	3 104	5 553	1 479 680
1997-98	18 094	11 496	6 574	-3 254	4 294	7 614	1 487 294

## MONTHLY/QUARTERLY

<b>1996-97</b>							
September	1 464	977	1 575	-1 508	1 068	731	1 475 245
October	1 779	1 196	..	..	..	..	..
November	1 536	835	..	..	..	..	..
December	1 424	920	1 796	-1 221	758	1 333	1 476 578
January	1 582	911	..	..	..	..	..
February	1 498	827	..	..	..	..	..
March	1 301	758	2 051	-1 037	1 142	2 156	1 478 734
April	1 673	935	..	..	..	..	..
May	1 805	1 080	..	..	..	..	..
June	1 492	959	1 672	-862	136	946	1 479 680
<b>1997-98</b>							
July	1 624	1 099	..	..	..	..	..
August	1 448	1 066	..	..	..	..	..
September	1 481	1 068	1 322	-755	1 124	1 691	1 481 371
October	1 581	1 116	..	..	..	..	..
November	1 460	877	..	..	..	..	..
December	1 459	960	1 544	-1 098	598	1 044	1 482 415
January	1 529	885	..	..	..	..	..
February	1 403	859	..	..	..	..	..
March	1 653	820	2 083	-591	2 027	3 519	1 485 934
April	1 458	923	..	..	..	..	..
May	1 492	898	..	..	..	..	..
June	1 513	1 046	1 625	-810	545	1 360	1 487 294
July	1 639	1 327	..	..	..	..	..
August	1 430	1 028	..	..	..	..	..
September	1 590	1 161	1 188	-422	778	1 544	1 488 838

(a) Registrations.

(b) Includes category jumping.

Period	EMPLOYED FULL-TIME.....		EMPLOYED PART-TIME.....		TOTAL EMPLOYED.....		UNEMPLOYED...		LABOUR FORCE.....	
	Males	Females	Males	Females	Males	Females	Males	Females	Males	Females
ANNUAL AVERAGE ('000)										
1992-93	322.2	143.2	39.2	126.8	361.4	270.0	51.9	29.9	413.3	299.9
1993-94	322.0	146.3	40.0	127.0	362.0	273.3	47.3	29.9	409.3	303.2
1994-95	323.1	151.5	42.6	131.3	365.7	282.8	44.6	28.7	410.3	311.5
1995-96	325.2	150.0	45.5	136.7	370.7	286.7	42.6	26.0	413.2	312.7
1996-97	320.8	150.5	48.6	140.7	369.4	291.2	42.1	27.5	411.5	318.7
1997-98	317.5	145.9	48.8	136.4	366.3	282.3	42.1	28.8	408.4	311.0
MONTHLY, ORIGINAL ('000)										
<b>1997-98</b>										
February	313.9	147.8	49.7	132.0	363.7	279.7	45.4	31.2	409.0	310.9
March	312.9	148.1	50.1	129.7	363.1	277.9	41.3	32.1	404.4	309.9
April	313.3	145.2	52.0	133.6	365.3	278.8	38.7	28.6	404.0	307.3
May	310.5	142.7	48.6	132.2	359.1	274.8	42.0	30.0	401.1	304.8
June	314.2	140.8	49.7	131.8	363.9	272.5	38.7	29.2	402.6	301.7
<b>1998-99</b>										
July	317.9	145.3	44.6	128.0	362.5	273.3	42.3	26.5	404.8	299.8
August	316.6	144.1	47.0	131.1	363.6	275.2	42.6	29.1	406.2	304.3
September	322.6	147.7	44.7	136.6	367.3	284.3	44.6	27.4	411.9	311.7
October	318.8	148.8	47.1	137.7	366.0	286.4	40.5	24.1	406.5	310.5
November	320.5	147.1	46.6	139.0	367.1	286.1	42.7	25.2	409.8	311.4
December	323.6	150.8	51.0	141.7	374.6	292.5	42.1	24.7	416.6	317.3
January	315.4	147.2	49.5	131.2	364.9	278.4	45.4	29.5	410.3	308.0
February	320.7	150.6	51.1	134.4	371.8	285.0	40.6	28.3	412.4	313.3
March	322.9	147.4	48.0	141.1	370.8	288.5	38.6	27.7	409.4	316.2
MONTHLY, TREND ('000)										
<b>1997-98</b>										
February	317.0	147.0	47.8	133.6	364.8	280.6	41.6	29.1	406.4	309.7
March	315.9	146.5	48.0	131.5	363.9	278.0	41.3	29.4	405.2	307.4
April	315.1	145.6	48.1	130.1	363.2	275.7	41.3	29.7	404.5	305.4
May	314.9	145.0	48.1	129.2	363.0	274.2	41.7	29.8	404.7	304.0
June	315.5	144.9	47.7	129.0	363.2	273.9	42.1	29.7	405.3	303.6
<b>1998-99</b>										
July	316.7	145.3	47.0	129.7	363.7	275.0	42.6	29.4	406.3	304.4
August	317.8	146.0	46.7	131.4	364.5	277.4	43.0	28.7	407.5	306.1
September	318.3	146.7	47.1	133.9	365.4	280.6	43.2	27.8	408.6	308.4
October	318.4	147.2	47.9	136.4	366.3	283.6	43.0	26.9	409.3	310.5
November	318.4	147.3	48.9	138.4	367.3	285.7	42.4	26.3	409.7	312.0
December	318.6	147.3	49.7	139.5	368.3	286.8	41.6	25.9	409.9	312.7
January	319.4	147.4	49.9	140.0	369.3	287.4	40.8	25.8	410.1	313.2
February	320.5	147.6	49.8	140.2	370.3	287.8	40.0	25.7	410.3	313.5
March	321.7	147.8	49.4	140.0	371.1	287.8	39.2	25.8	410.3	313.6
PERCENTAGE CHANGE FROM PREVIOUS MONTH, TREND										
<b>1997-98</b>										
February	-0.3	0.0	-0.4	-1.7	-0.3	-0.8	-1.2	1.0	-0.4	-0.6
March	-0.3	-0.3	0.4	-1.6	-0.2	-0.9	-0.7	1.0	-0.3	-0.7
April	-0.3	-0.6	0.2	-1.1	-0.2	-0.8	0.0	1.0	-0.2	-0.7
May	-0.1	-0.4	0.0	-0.7	-0.1	-0.5	1.0	0.3	0.0	-0.5
June	0.2	-0.1	-0.8	-0.2	0.1	-0.1	1.0	-0.3	0.1	-0.1
<b>1998-99</b>										
July	0.4	0.3	-1.5	0.5	0.1	0.9	1.2	-1.0	0.2	0.3
August	0.3	0.5	-0.6	1.3	0.2	0.9	0.9	-2.4	0.3	0.6
September	0.2	0.5	0.9	1.9	0.2	1.2	0.5	-3.1	0.3	0.8
October	0.0	0.3	1.7	1.9	0.2	1.1	-0.5	-3.2	0.2	0.7
November	0.0	0.1	2.1	1.5	0.3	0.7	-1.4	-2.2	0.1	0.5
December	0.1	0.0	1.6	0.8	0.3	0.4	-1.9	-1.5	0.0	0.2
January	0.3	0.1	0.4	0.4	0.3	0.2	-1.9	-0.4	0.0	0.2
February	0.3	0.1	-0.2	0.1	0.3	0.1	-2.0	-0.4	0.0	0.1
March	0.4	0.1	-0.8	-0.1	0.2	0.0	-2.0	0.4	0.0	0.0

(a) Population aged 15 and over.

Period	CIVILIAN POPULATION.....		UNEMPLOYMENT RATE.....				PARTICIPATION RATE...		
	Males aged 15 and over	Females aged 15 and over	Persons aged 15-19	Males all ages	Females all ages	Persons all ages	Males	Females	Persons
	'000	'000	%	%	%	%	%	%	%
ANNUAL AVERAGE									
1992-93	567.4	588.9	26.6	12.6	10.0	11.5	72.8	51.0	61.7
1993-94	570.6	592.0	28.3	11.5	9.8	10.8	71.7	51.2	61.3
1994-95	573.7	594.7	25.2	10.9	9.2	10.2	71.5	52.4	61.8
1995-96	576.2	597.1	27.2	10.3	8.3	9.5	71.7	52.4	61.9
1996-97	579.8	600.6	23.7	10.2	8.6	9.5	71.0	53.1	61.9
1997-98	583.9	604.5	23.2	10.3	9.2	9.8	70.8	51.5	61.0
PERCENTAGE CHANGE FROM PREVIOUS YEAR									
1992-93	0.6	0.6	..	..	..	..	..	..	..
1993-94	0.6	0.6	..	..	..	..	..	..	..
1994-95	0.6	0.5	..	..	..	..	..	..	..
1995-96	0.4	0.5	..	..	..	..	..	..	..
1996-97	0.6	0.4	..	..	..	..	..	..	..
1997-98	0.7	0.6	..	..	..	..	..	..	..
MONTHLY, ORIGINAL									
<b>1997-98</b>									
December	578.7	605.2	23.3	10.2	9.0	9.7	71.6	52.1	61.6
January	579.1	605.6	26.5	11.1	10.7	10.9	70.7	50.8	60.5
February	579.5	606.0	24.8	11.1	10.0	10.6	70.6	51.3	60.7
March	579.9	606.4	26.1	10.2	10.3	10.3	69.7	51.1	60.2
April	580.2	606.7	23.0	9.6	9.3	9.5	69.6	50.7	59.9
May	580.5	607.0	24.8	10.5	9.8	10.2	69.1	50.2	59.5
June	580.7	607.3	19.9	9.6	9.7	9.6	69.3	49.7	59.3
<b>1998-99</b>									
July	581.1	607.7	23.0	10.5	8.8	9.8	69.7	49.3	59.3
August	581.4	608.0	23.3	10.5	9.6	10.1	69.9	50.0	59.7
September	581.7	608.4	23.1	10.8	8.8	9.9	70.8	51.2	60.8
October	582.2	608.8	23.1	10.0	7.8	9.0	69.8	51.0	60.2
November	582.6	609.2	21.2	10.4	8.1	9.4	70.3	51.1	60.5
December	583.0	609.7	19.8	10.1	7.8	9.1	71.5	52.0	61.5
January	583.4	610.1	20.1	11.1	9.6	10.4	70.3	50.5	60.2
February	583.8	610.5	20.4	9.8	9.0	9.5	70.6	51.3	60.8
March	584.2	610.9	21.8	9.4	8.8	9.1	70.1	51.8	60.7
MONTHLY, TREND									
<b>1997-98</b>									
December	n.a.	n.a.	n.a.	10.4	9.1	9.8	70.8	51.8	61.0
January	n.a.	n.a.	n.a.	10.3	9.3	9.9	70.5	51.5	60.8
February	n.a.	n.a.	n.a.	10.2	9.4	9.9	70.1	51.1	60.4
March	n.a.	n.a.	n.a.	10.2	9.6	9.9	69.9	50.7	60.1
April	n.a.	n.a.	n.a.	10.2	9.7	10.0	69.7	50.3	59.8
May	n.a.	n.a.	n.a.	10.3	9.8	10.1	69.7	50.1	59.7
June	n.a.	n.a.	n.a.	10.4	9.8	10.1	69.8	50.0	59.7
<b>1998-99</b>									
July	n.a.	n.a.	n.a.	10.5	9.6	10.1	69.9	50.1	59.8
August	n.a.	n.a.	n.a.	10.6	9.4	10.0	70.1	50.3	60.0
September	n.a.	n.a.	n.a.	10.6	9.0	9.9	70.2	50.7	60.2
October	n.a.	n.a.	n.a.	10.5	8.7	9.7	70.3	51.0	60.4
November	n.a.	n.a.	n.a.	10.3	8.4	9.5	70.3	51.2	60.6
December	n.a.	n.a.	n.a.	10.2	8.3	9.3	70.3	51.3	60.6
January	n.a.	n.a.	n.a.	9.9	8.2	9.2	70.3	51.3	60.6
February	n.a.	n.a.	n.a.	9.7	8.2	9.1	70.3	51.3	60.6
March	n.a.	n.a.	n.a.	9.6	8.2	9.0	70.2	51.3	60.6

(a) Population aged 15 and over.

# 21

## AVERAGE WEEKLY EARNINGS OF EMPLOYEES

Period	FULL-TIME ADULTS ORDINARY TIME EARNINGS			FULL-TIME ADULTS TOTAL EARNINGS.....			ALL EMPLOYEES TOTAL EARNINGS.....		
	Males	Females	Persons	Males	Females	Persons	Males	Females	Persons
ANNUAL AVERAGE (\$ per week)									
1992-93	610.10	534.90	585.40	646.40	546.80	613.70	560.00	382.60	477.40
1993-94	625.10	547.60	600.00	667.50	560.10	632.70	595.10	396.60	503.30
1994-95	632.70	559.10	608.20	681.70	572.50	645.30	599.90	411.90	513.40
1995-96	653.80	555.90	622.80	703.20	568.50	660.10	620.10	403.90	520.70
1996-97	678.20	575.10	644.30	735.10	589.40	687.20	636.90	408.70	529.80
1997-98	705.60	606.05	670.53	755.05	619.33	707.20	646.28	438.50	545.70
PERCENTAGE CHANGE FROM PREVIOUS YEAR									
1992-93	3.7	2.1	3.1	3.4	2.4	3.0	-0.8	-1.1	-1.3
1993-94	2.5	2.4	2.5	3.3	2.4	3.1	6.3	3.7	5.4
1994-95	1.2	2.1	1.4	2.1	2.2	2.0	0.8	3.9	2.0
1995-96	3.3	-0.6	2.4	3.1	-0.7	2.3	3.4	-1.9	1.4
1996-97	3.7	3.5	3.5	4.5	3.7	4.1	2.7	1.2	1.8
1997-98	4.0	5.4	4.1	2.7	5.1	2.9	1.5	7.3	3.0
QUARTERLY (\$ per week)									
<b>1997-98</b>									
15 August	703.90	583.70	663.40	756.20	593.50	701.40	651.00	420.00	542.50
21 November	689.70	594.20	655.00	739.90	607.40	691.80	631.70	433.90	533.90
20 February	715.10	626.20	683.60	764.60	642.10	721.20	656.10	447.70	553.60
15 May	713.80	620.10	680.10	759.50	634.30	714.40	646.30	452.40	552.80
<b>1998-99</b>									
21 August	737.50	623.50	694.70	785.60	636.30	729.60	670.40	462.10	569.60
20 November	745.20	631.50	702.50	811.60	652.90	752.00	679.00	471.50	580.30
PERCENTAGE CHANGE FROM CORRESPONDING REFERENCE DATE IN PREVIOUS YEAR									
<b>1997-98</b>									
15 August	5.6	3.8	4.9	5.0	3.3	4.3	3.6	4.1	3.6
21 November	3.0	3.3	2.4	1.6	2.6	1.0	0.8	7.9	2.2
20 February	4.3	8.3	5.2	3.1	8.1	4.2	2.5	9.3	4.3
15 May	3.3	6.1	3.7	1.3	6.2	2.2	-0.9	7.8	1.9
<b>1998-99</b>									
21 August	4.8	6.8	4.7	3.9	7.2	4.0	3.0	10.0	5.0
20 November	8.0	6.3	7.3	9.7	7.5	8.7	7.5	8.7	8.7
PERCENTAGE CHANGE FROM PREVIOUS REFERENCE DATE									
<b>1997-98</b>									
15 August	1.9	-0.1	1.2	0.8	-0.6	0.3	-0.2	0.1	0.0
21 November	-2.0	1.8	-1.3	-2.2	2.3	-1.4	-3.0	3.3	-1.6
20 February	3.7	5.4	4.4	3.3	5.7	4.2	3.9	3.2	3.7
15 May	-0.2	-1.0	-0.5	-0.7	-1.2	-0.9	-1.5	1.0	-0.1
<b>1998-99</b>									
21 August	3.3	0.6	2.2	3.4	0.3	2.1	3.7	2.1	3.0
20 November	1.0	1.3	1.1	3.3	2.6	3.1	1.3	2.0	1.9

SECURED HOUSING FINANCE  
COMMITMENTS.....

Period	Dwelling units	Value	Alterations and additions	Personal finance commitments	Commercial finance commitments	Lease finance commitments
	no.	\$m	\$m	\$m	\$m	\$m
ANNUAL						
1992-93	36 960	2 569.5	102.8	1 656.9	5 122.5	249.5
1993-94	45 725	3 387.9	221.8	1 840.3	5 467.2	250.6
1994-95	36 429	2 879.7	242.2	2 152.2	5 405.6	271.4
1995-96	38 707	2 982.2	240.7	2 215.5	6 516.2	265.7
1996-97	36 661	2 956.1	188.1	2 469.2	6 092.4	232.0
1997-98	37 379	3 129.7	139.5	2 763.9	6 486.4	267.3
PERCENTAGE CHANGE FROM PREVIOUS YEAR						
1992-93	16.4	23.3	15.8	13.7	-23.2	-2.6
1993-94	23.7	31.9	115.7	11.1	6.7	0.5
1994-95	-20.3	-15.0	9.2	16.9	-1.1	8.3
1995-96	6.3	3.6	-0.6	2.9	20.5	-2.1
1996-97	-5.3	-0.9	-21.9	11.5	-6.5	-12.7
1997-98	-2.0	5.9	-25.8	11.9	6.5	15.2
MONTHLY						
<b>1997-98</b>						
December	3 212	275.3	10.1	233.3	831.4	20.0
January	2 515	207.1	8.6	196.5	378.8	15.3
February	3 107	254.1	10.3	209.4	409.2	18.6
March	3 349	282.8	15.8	250.9	518.2	24.2
April	3 227	271.5	12.7	227.6	466.3	16.1
May	3 054	258.0	12.1	235.6	456.3	23.0
June	3 581	307.0	14.0	265.9	779.2	37.5
<b>1998-99</b>						
July	3 144	269.0	12.0	249.6	505.2	32.3
August	2 787	233.0	9.0	248.1	490.4	15.5
September	2 807	242.0	9.0	248.8	669.0	16.4
October	2 685	238.0	11.0	237.0	457.3	15.3
November	3 000	278.0	11.0	256.5	449.9	22.6
December	3 151	294.0	14.0	273.8	596.8	17.4
January	2 392	216.0	10.0	236.4	325.5	21.8
February	3 019	274.0	10.0	254.5	504.3	19.6
PERCENTAGE CHANGE FROM PREVIOUS MONTH						
<b>1997-98</b>						
December	5.9	6.8	-12.9	6.2	83.8	12.4
January	-21.7	-24.6	-14.3	-15.8	-54.4	-23.5
February	23.5	22.3	15.4	6.6	8.0	21.6
March	7.8	11.3	53.7	19.9	26.6	30.3
April	-3.6	-4.0	-20.0	-9.3	-10.0	-33.4
May	-5.4	-5.0	-4.7	3.5	-2.1	42.9
June	17.3	19.0	16.1	12.9	70.8	62.7
<b>1998-99</b>						
July	-12.2	-12.4	-14.3	-6.1	-35.2	-13.8
August	-11.4	-13.4	-25.0	-0.6	-2.9	-51.9
September	0.7	3.9	0.0	0.3	36.4	5.3
October	-4.3	-1.7	22.2	-4.8	-31.6	-6.3
November	11.7	16.8	0.0	8.2	-1.6	47.4
December	5.0	5.8	27.3	6.7	32.6	-22.8
January	-24.1	-26.5	-28.6	-13.7	-45.5	25.2
February	26.2	26.9	0.0	7.7	54.9	-10.4

## PUBLICATIONS SOURCE INDEX

- (1) *Australian National Accounts, Quarterly State Details* (Cat. no. 5206.0.40.001)
- (2) *International Merchandise Trade, Australia* (Cat. no. 5422.0) Quarterly
- (3) *Retail Trade, Australia* (Cat. no. 8501.0) Monthly
- (4) *New Motor Vehicles Registrations, Australia, Preliminary* (Cat. no. 9301.0) Monthly
- (5) *State Estimates of Private New Capital Expenditure* (Cat. no. 5646.0) Quarterly
- (6) *Tourist Accommodation, Australia* (Cat. no. 8635.0) Quarterly
- (7) *Building Approvals, Australia* (Cat. no. 8731.0) Monthly
- (8) *Building Activity, Australia* (Cat. no. 8752.0) Quarterly
- (8a) *Building Activity, Australia, Dwelling Unit Commencements, Preliminary* (Cat. no. 8750.0) Quarterly
- (9) *Engineering Construction Activity, Australia* (Cat. no. 8762.0) Quarterly
- (10) *Manufacturing Production, Australia, Preliminary* (Cat. no. 8301.0) Quarterly
- (11) *Livestock Products, Australia* (Cat. no. 7215.0) Quarterly
- (12) *Actual and Expected Private Mineral Exploration, Australia* (Cat. no. 8412.0) Quarterly
- (13) *Consumer Price Index* (Cat. no. 6401.0) Quarterly
- (14) *Price Index of Materials Used in House Building, Six State Capital Cities and Canberra* (Cat. no. 6408.0) Quarterly
- (15) *Price Index of Materials Used in Building Other Than House Building, Six State Capital Cities and Canberra* (Cat. no. 6407.0) Quarterly
- (16) *House Price Indexes: Eight Capital Cities* (Cat. no. 6416.0) Quarterly
- (17) *Australian Demographic Statistics* (Cat. no. 3101.0) Quarterly
- (18) *Labour Force, Australia, Preliminary* (Cat. no. 6202.0) Monthly
- (19) *Job Vacancies and Overtime, Australia* (Cat. no. 6354.0) Quarterly
- (20) *Industrial Disputes, Australia* (Cat. no. 6321.0) Monthly
- (21) Unpublished overseas arrival and departure statistics on microfiche
- (22) *Average Weekly Earnings, States and Australia* (Cat. no. 6302.0) Quarterly
- (23) *Wage Cost Index, Australia* (Cat. no. 6345.0) Quarterly
- (24) *Housing Finance for Owner Occupation, Australia* (Cat. no. 5609.0) Monthly
- (25) Unpublished statistics available from PC AUSSTATS
- (26) *Reserve Bank of Australia Bulletin*

## SELF-HELP ACCESS TO STATISTICS

*DIAL-A-STATISTIC* For current and historical Consumer Price Index data, call 1902 981 074.  
For the latest figures for National Accounts, Balance of Payments, Labour Force, Average Weekly Earnings, Estimated Resident Population and the Consumer Price Index call 1900 986 400.  
These calls cost 75c per minute.

*INTERNET* [www.abs.gov.au](http://www.abs.gov.au)

*LIBRARY* A range of ABS publications is available from public and tertiary libraries Australia wide. Contact your nearest library to determine whether it has the ABS statistics you require.

## WHY NOT SUBSCRIBE?

*PHONE* +61 1300 366 323

*FAX* +61 3 9615 7848

## CONSULTANCY SERVICES

ABS offers consultancy services on a user pays basis to help you access published and unpublished data. Data that are already published and can be provided within 5 minutes is free of charge. Statistical methodological services are also available. Please contact:

<i>City</i>	<i>By phone</i>	<i>By fax</i>
Canberra	02 6252 6627	02 6207 0282
Sydney	02 9268 4611	02 9268 4668
Melbourne	03 9615 7755	03 9615 7798
Brisbane	07 3222 6351	07 3222 6283
Perth	08 9360 5140	08 9360 5955
Adelaide	08 8237 7400	08 8237 7566
Hobart	03 6222 5800	03 6222 5995
Darwin	08 8943 2111	08 8981 1218



2130740005992  
ISSN 1039-8880

RRP \$19.00

*POST* Client Services, ABS, PO Box 10, Belconnen ACT 2616

*EMAIL* [client.services@abs.gov.au](mailto:client.services@abs.gov.au)